



PARACUBERTM
REVOLUTIONARY CHUTE STORAGE



PARACUBER™

REVOLUTIONARY CHUTE STORAGE

Facilitates bulk storage, optimized logistics and access control for parachutes, meeting the demands of the modern military

The **PARACUBER** protects all chutes within a lockable weather protected and snag-free cube, with chutes protected in ideal storage conditions, ready to operate, and all contained within a hot-dip galvanized stackable steel pallet framework.

Stackable with **3000lbs** per crate, up to 3 crates high, the **PARACUBER** offers revolutionary parachute storage and logistics for modern military requirements.

DEPLOYABLE



HEAVY DUTY



FORKLIFT
OPERABLE



NO BOLTS
ASSEMBLY



Construction:

PALLET & FRAMEWORK: Hot dip galvanized

PANELS:

Inner - pre-galvanized steel
Outer - Aluminium polyester powder-coated
olive green for added durability



- Overall empty weight - **1100lbs (510kgs)**
- Each panel - **70lbs (32kgs)**
- Weight capacity per module - **3000lbs (1360kgs)**

- Optimized shipping when empty, collapsing by over 80% in volume, with 10 minutes max assembly to fold out ready for use when required.

- Ship **15 modules** in a 20ft container, **30 modules** in a 40ft HC, for efficient transportation and internal logistics.



Capacity:

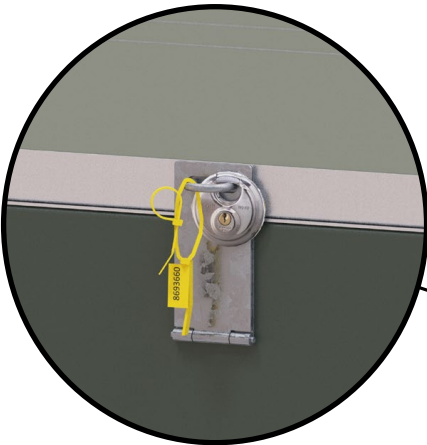
T11 chutes, QTY 60
MC6 chutes, QTY 16 (min)

PARACUBER

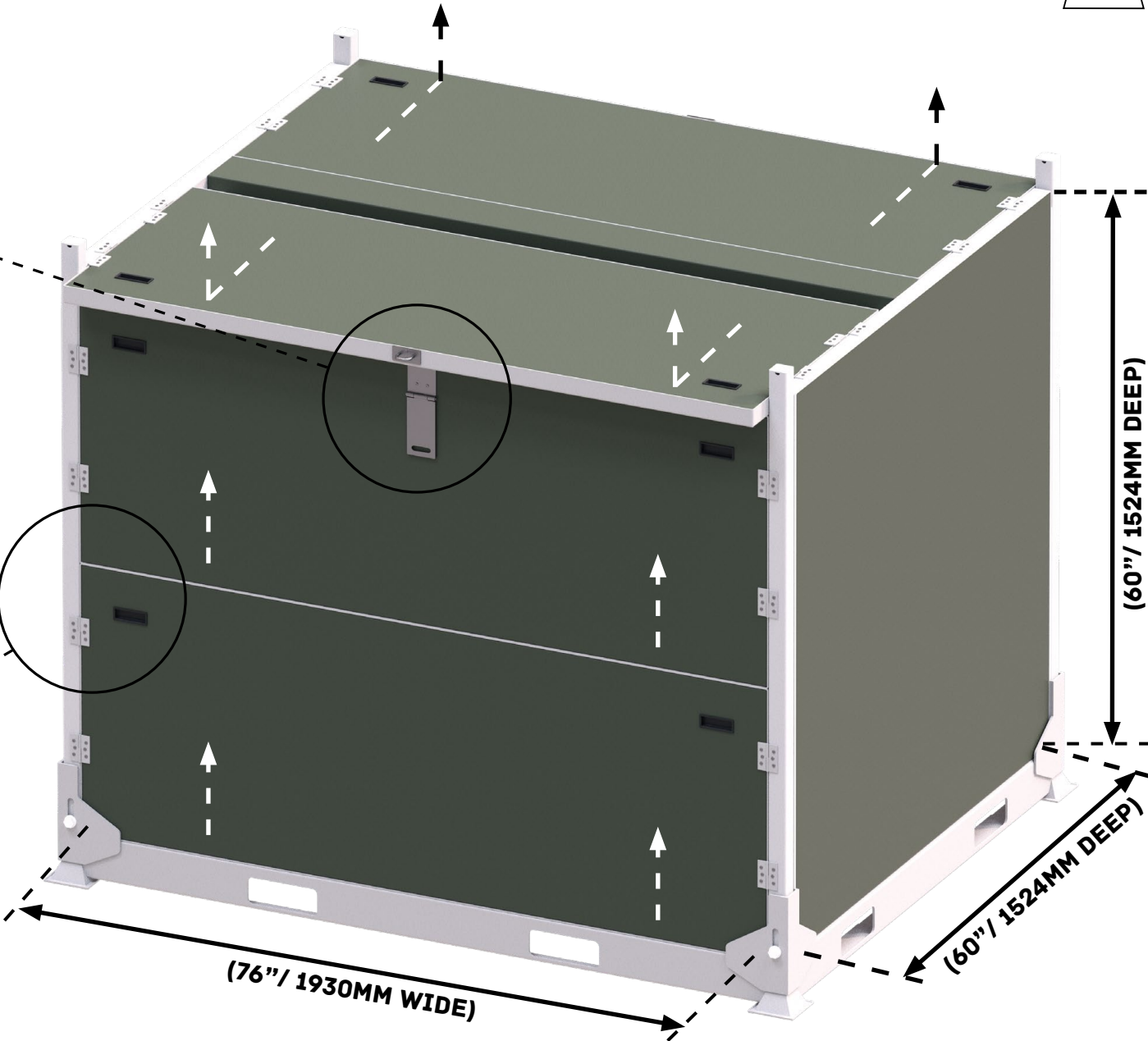
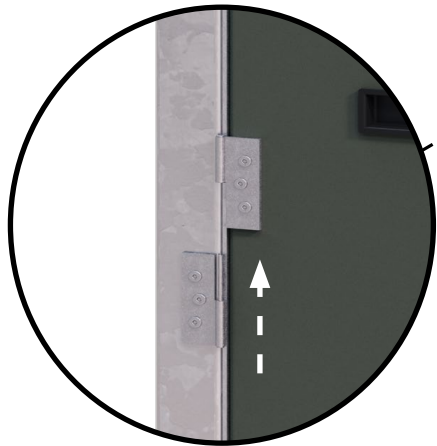
REVOLUTIONARY CHUTE STORAGE

With the **PARACUBER** from **BAN-AIR**, chutes get protected from environmental factors such as dirt, damp, rain, sun and UV, as well as offering much greater protection for the parachutes themselves, including zero sharp edges or snagging possibility.

3000LBS (1360KGS) CAPACITY



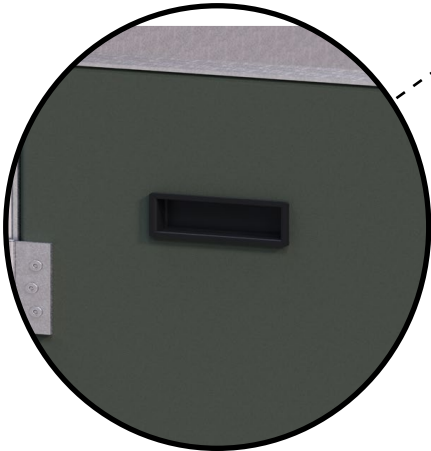
Added to this the PARACUBER has the ability to **security seal** chutes once packed, with a design offering immediate visibility in case of any tampering or sabotage, along with document control space to identify contents.



PARACUBER

REVOLUTIONARY CHUTE STORAGE

3000LBS (1360KGS) CAPACITY

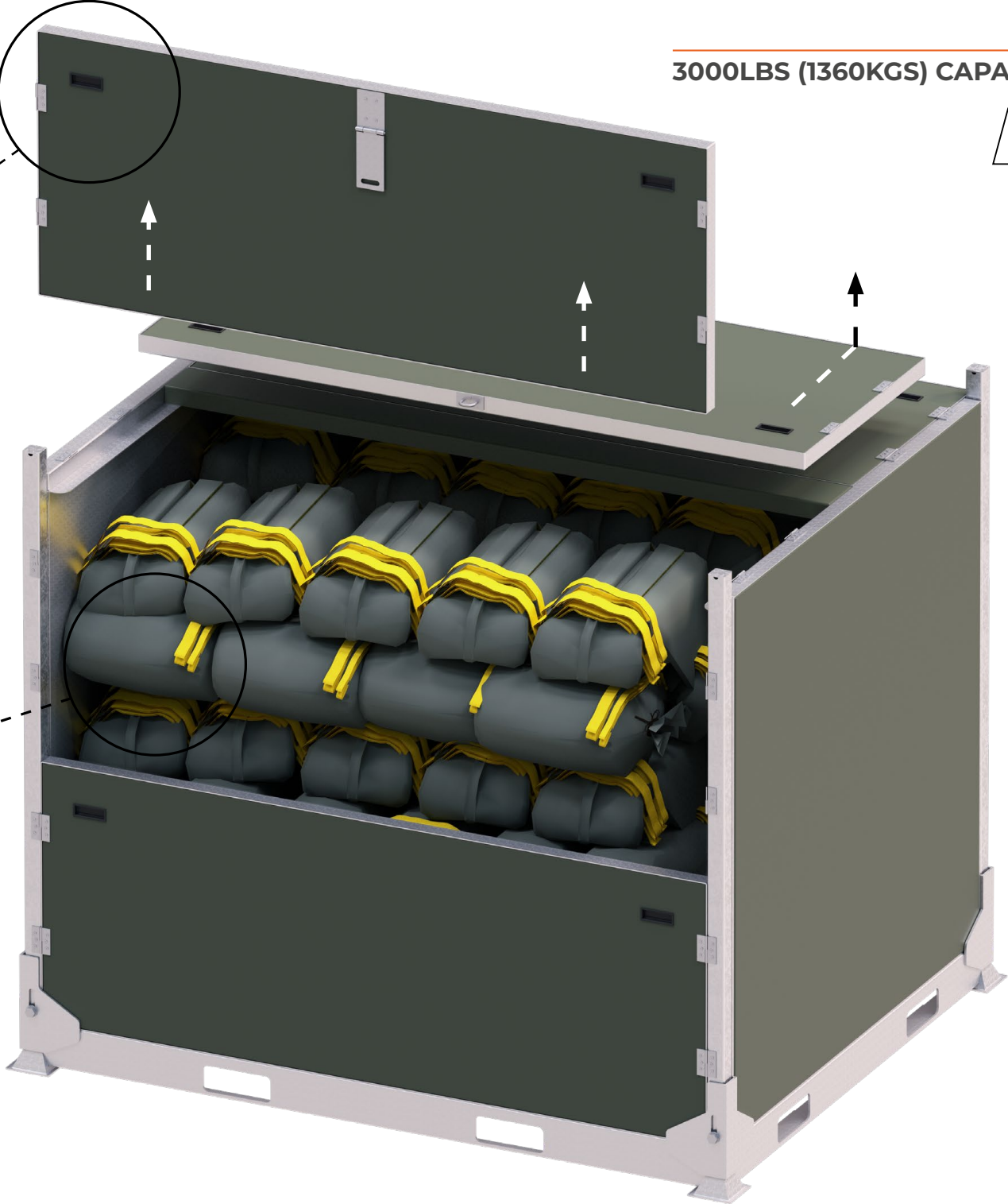
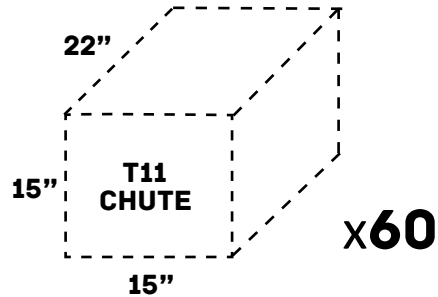


Recessed handles (x2 per panel) for lifting
Each panel 70lbs (32kgs) for 2 man lift

Capacity:

T11 chutes, QTY 60
MC6 chutes, QTY 16 (min)

Overall internal size 76" x 60" x 58" (LWH) suitable
for a variety of general parachute requirements



PARACUBER

REVOLUTIONARY CHUTE STORAGE

RAPID
ASSEMBLY



NO BOLTS



Construction:

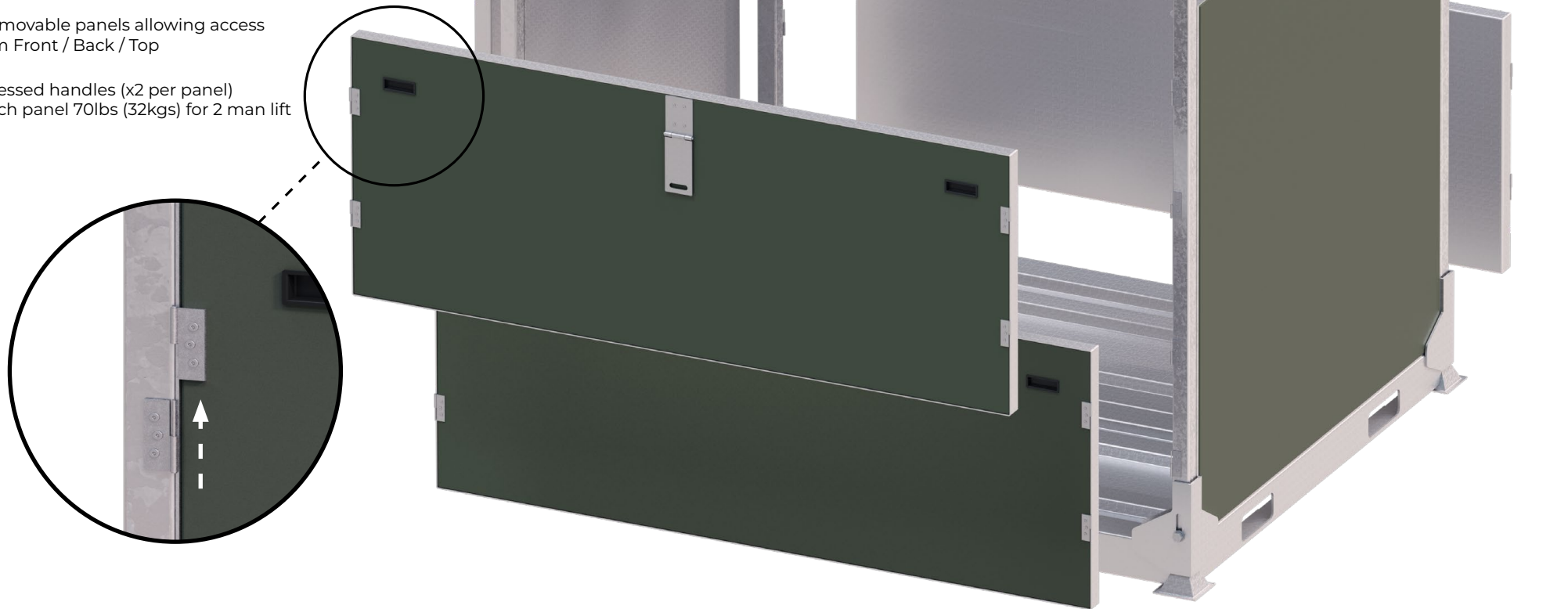
PALLET & FRAMEWORK: Hot dip galvanized

PANELS:

Inner - pre-galvanized steel
Outer - Aluminium polyester powder-coated
olive green for added durability

6 removable panels allowing access
from Front / Back / Top

Recessed handles (x2 per panel)
- Each panel 70lbs (32kgs) for 2 man lift



PARACUBER

REVOLUTIONARY CHUTE STORAGE

6 removable panels allowing access from **Front / Back / Top**



FRONT ACCESS



REAR ACCESS



TOP ACCESS



FULL ACCESS

NO BOLTS



RAPID
ASSEMBLY



HEAVY DUTY



FORKLIFT
OPERABLE



DEPLOYABLE



READINESS



COST EFFECTIVE



PARACUBER

REVOLUTIONARY CHUTE STORAGE

RAPID
ASSEMBLY



NO BOLTS



HEAVY DUTY



FORKLIFT
OPERABLE



DEPLOYABLE



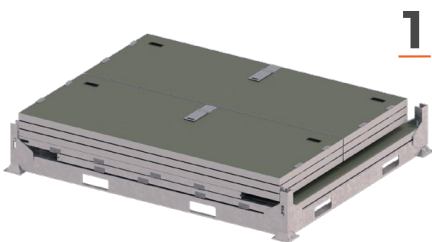
READINESS



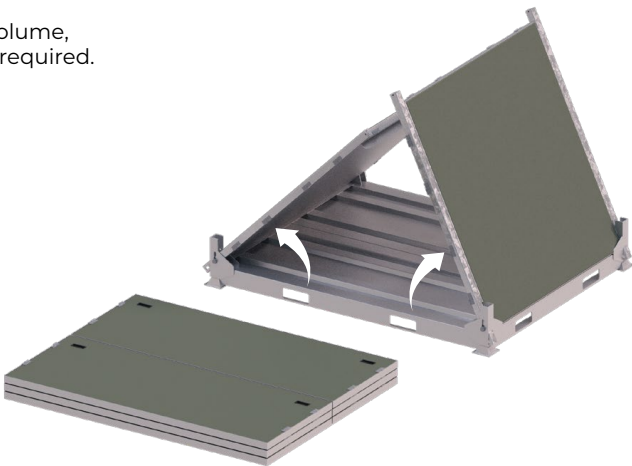
COST EFFECTIVE



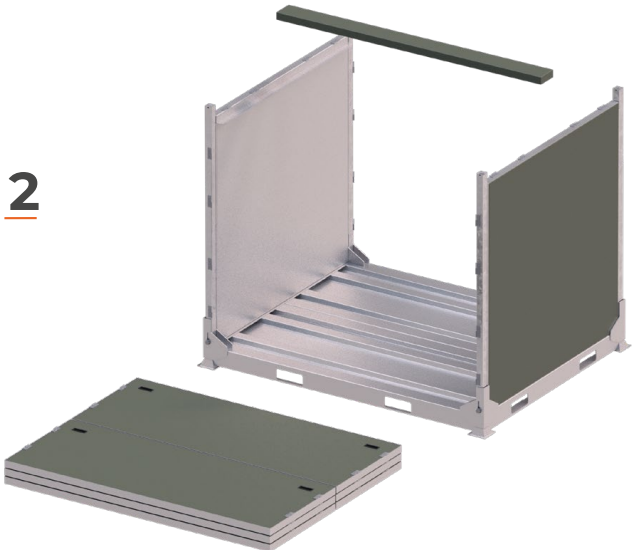
Optimized shipping when empty, collapsing by over 80% in volume, with 10 minutes max assembly to fold out ready for use when required.



1



2



3



4



5



6



www.ban-air.com

Distributed By:



patterson•pope

SPACE MADE **SIMPLE.**

pattersonpope.com

866.866.4778