

PLANNING GUIDE

Spacesaver Firearm Storage

This document is an outline of the major planning parameters for firearm storage solutions offered by Spacesaver.

The firearm storage products include:

- Wall Mounted Handgun Lockers (EDHGx)

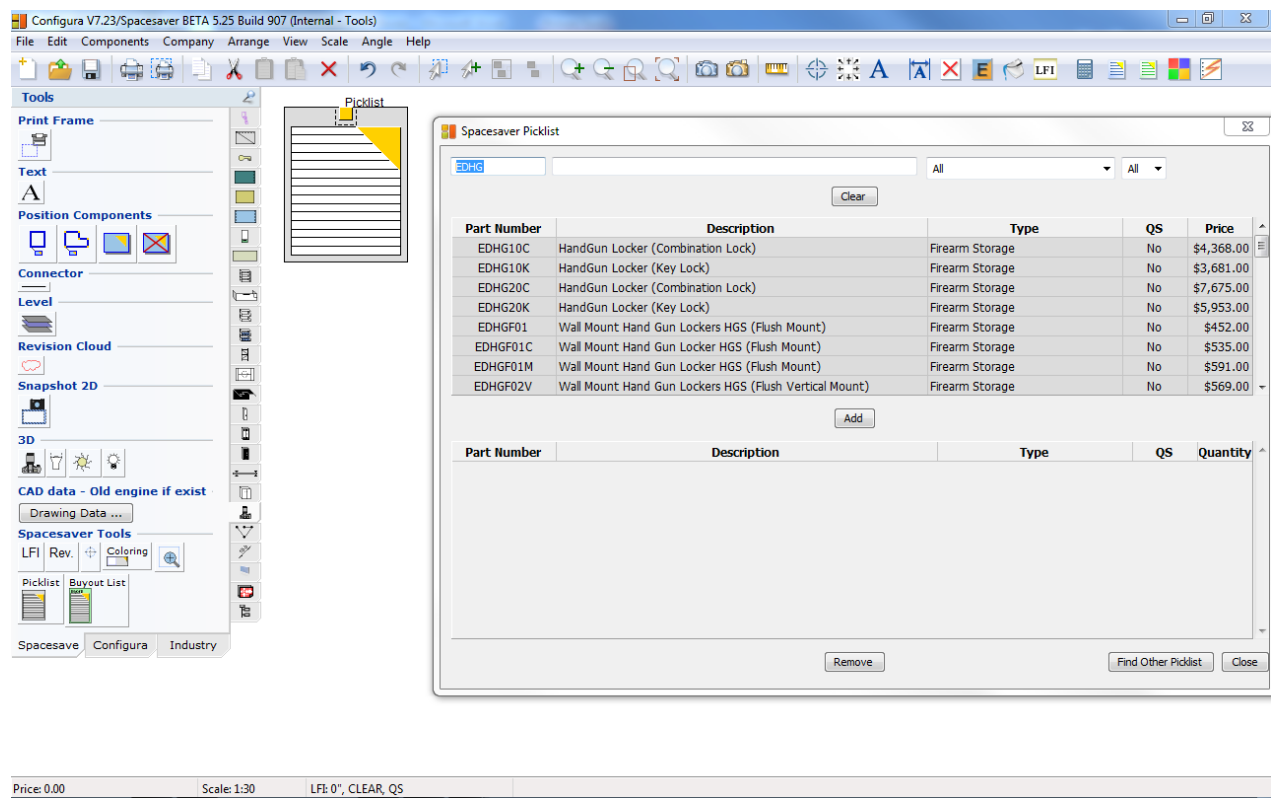
Each product line has its own section and is outlined in this document below.

The Firearm Locker lines are the original DSM products now offered by Spacesaver; not to be confused with the weapon storage solutions offered by Spacesaver (i.e. UWR, Weapons Racks II & III).

THIS DOCUMENT IS INTENDED TO BE A TRAINING/REFERENCE TOOL! IF THERE IS ADDITIONAL INFORMATION THAT YOU BELIEVE SHOULD BE INCLUDED, OR ITEMS THAT ARE MISSING, PLEASE DON'T HESITATE TO BRING IT TO THE ATTENTION OF YOUR AC SALES SUPPORT REPRESENTATIVE AND/OR PRODUCT MANAGEMENT.



IMPORTANT: At this time, the firearm Locker items cannot be “drawn” in Configura, and must be added to the Bill of Material (BOM) via pick-list. Contact your AC Sales Support Representative with any questions you may have.



Additional collateral available for Firearm Storage products

The following items are on SpaceNet 3.0:

- [Commercial Price List](#)
- [Installation instructions – Wallmount Handgun lockers](#)

See the published color charts for available colors and finishes.

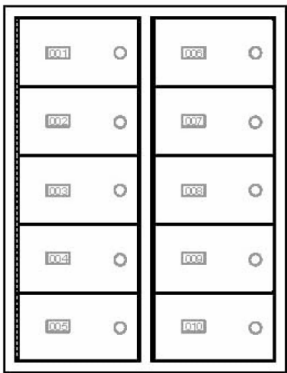
- All firearm lockers will be painted in TEXTURED, unless otherwise specified at the time of order.

WALL MOUNTED HANDGUN LOCKERS

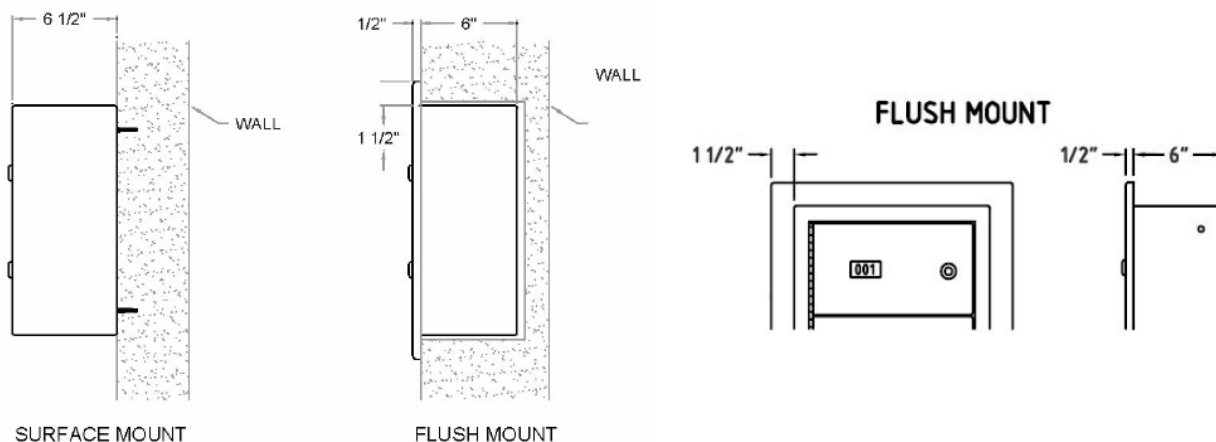
Wall mounted handgun lockers are designed and manufactured for use in Sally Ports and any other area that requires secured storage of handguns.



- There are eight (8) basic door configurations, with the number of doors ranging from one (EDHGx01) to ten (EDHGx10) openings. See figures below. Specify the desired quantity of doors at time of order.



- Available in either a surface (EDHGSxx) or flush (EDHGFxx) mount. Specify mounting at time of order.



Standard Features:

- ALL door openings are: 5 3/16" x 10 3/8"
- Lockers and doors are 16 gauge steel construction
- Number tags are provided on each door
- All locks are keyed differently
- Keys are only removable in the locked position
- Two (2) master keys provided per project (specify more if desired)
- 1/8" neoprene liner on all shelves
- Provided in textured powder coat paint
- Pre-drilled mounting holes in sides and back
- Flush mounted cabinets come with 1 1/2" wide trim frame

Site Considerations:

- For flush mountings, use chart below to decide on wall openings
- Use tap cons, sleeve anchors, or wood screws thru holes on inside of compartments
- Wood may have to be mounted on inside of opening to receive wood screws

Model Number	Model Type	No. of Doors	Actual Size of Cabinet			Shipping Weight	Size of Wall Opening		
			Width	Height	Depth		Width	Height	Depth
EDHGS01	Surface	1	13"	8 1/8"	6 1/2"	10 lbs		NONE	
EDHGS02V	Surface	2	13"	14 1/8"	6 1/2"	17 lbs		NONE	
EDHGS03V	Surface	3	13"	20 1/8"	6 1/2"	24 lbs		NONE	
EDHGS04V	Surface	4	13"	26 1/8"	6 1/2"	28 lbs		NONE	
EDHGS04	Surface	4	25"	14 1/8"	6 1/2"	29 lbs		NONE	
EDHGS06	Surface	6	25"	20 1/8"	6 1/2"	49 lbs		NONE	
EDHGS08	Surface	8	25"	26 1/8"	6 1/2"	55 lbs		NONE	
EDHGS10	Surface	10	25"	32 1/8"	6 1/2"	78 lbs		NONE	
EDHGF01	Flush	1	13"	8 1/8"	6 1/2"	12 lbs	13 1/2"	8 1/2"	6 1/2"
EDHGF02V	Flush	2	13"	14 1/8"	6 1/2"	20 lbs	13 1/2"	14 1/2"	6 1/2"
EDHGF03V	Flush	3	13"	20 1/8"	6 1/2"	27 lbs	13 1/2"	20 1/2"	6 1/2"
EDHGF04V	Flush	4	13"	26 1/8"	6 1/2"	31 lbs	13 1/2"	26 1/2"	6 1/2"
EDHGF04	Flush	4	25"	14 1/8"	6 1/2"	32 lbs	25 1/2"	14 1/2"	6 1/2"
EDHGF06	Flush	6	25"	20 1/8"	6 1/2"	53 lbs	25 1/2"	20 1/2"	6 1/2"
EDHGF08	Flush	8	25"	26 1/8"	6 1/2"	59 lbs	25 1/2"	26 1/2"	6 1/2"
EDHGF10	Flush	10	25"	32 1/8"	6 1/2"	82 lbs	25 1/2"	32 1/2"	6 1/2"

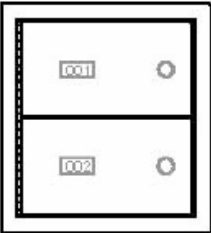
Door Configurations:

- “xx” = number of doors (01,02,03,04,06,08,10)
- “S” = Surface mounted
- “F” = Flush mounted
- “V” Suffix stands for “Vertical” (only available as shown below)

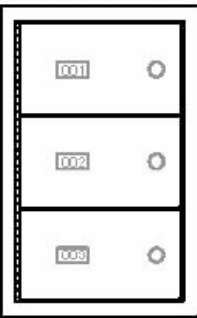
EDHGS01



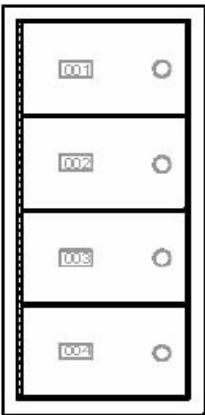
EDHGS02V



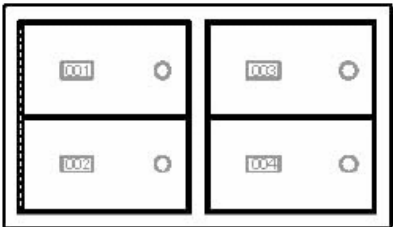
EDHGS03V



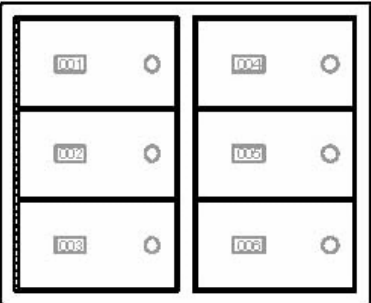
EDHGS04V



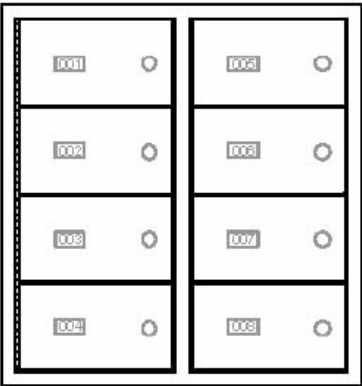
EDHGS04



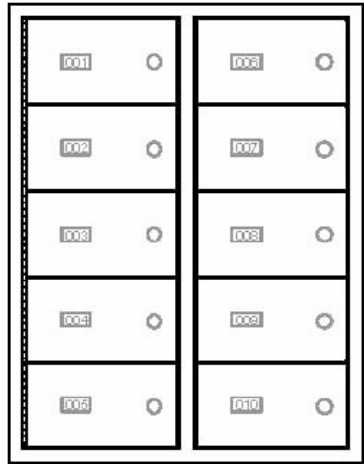
EDHGS06



EDHGS08



EDHGS10



Locking Options:

There are four (4) basic lock configurations available with the handgun lockers; they are specified using a suffix at the end of the catalog number:

- “No suffix” = Standard tube lock (i.e. EDHGF04). All keyed differently, two masters key provided. (Pictured at right)
- “C” suffix = “Combination” lock (i.e. EDHGF06C). Combination lock with master keys provided.
- “M” suffix = “Master Key” locks (i.e. EDHGF10M). All keyed differently, with master keys provided.
- “DIGI” suffix = “Digilock” (i.e. EDHGF06DIGI). Keypad style lock. Not in pick-list. Contact AC Sales support for additional information. (Pictured at right)
- Medeco™ Locks available upon request. (Additional cost and longer lead times may apply; consult with AC Sales Support at time of order).

