

PLANNING GUIDE

Evidence Storage

This document is an outline of the major product offerings and planning parameters for the Evidence Storage solutions offered by Spacesaver. It includes:

- Evidence Lockers
- Refrigeration Units



NOTE: This document describes the original MECHANICAL offering. Evidence Lockers equipped with ControLoc Technology by Spacesaver have a separate Planning Guide on SpaceNet.

EVIDENCE LOCKERS

Spacesaver evidence lockers provide a secure chain of custody with two distinctive storage processes:

- Pass-thru (PT)
- Non pass-thru (NPT)

Neither process requires keys for deposit of evidence.

Pass-Thru (PT) Lockers

(One-Way, Drop-Off)

- Each model consists of multiple compartments of various sizes, with self-closing doors.
- Individual Push-Button locks are on the front of each door (on customer/officer side).
- Typically, a single hinged keyed rear door provides access on the controlled/property side.
- Rear door locking mechanisms cannot be accessed from front doors.
- Rear door can be solid or mesh.

Non-Pass Thru (NPT) Lockers

(Drop-off)

- Each model consists of multiple compartments of various sizes, with self-closing doors.
- Individual Push-Button locks are on the front of each door (on customer/officer side).
- There is no compartment access from the rear of the locker.

Operation

- An [Owner's Manual](#) for the basic Evidence Locker is available on SpaceNet. The manual describes basic operation of both PT and NPT process. Review of this manual will result in a better understanding a customer's practice.

Standard Features

- Unattended evidence drop off (no keys required) ** **Selling Feature**
- Modular construction, units shipped fully assembled
- Self closing doors, rubber door stops
- 14 and 18 gauge cold rolled steel construction
- Pre-drilled mounting holes in base and sides of locker



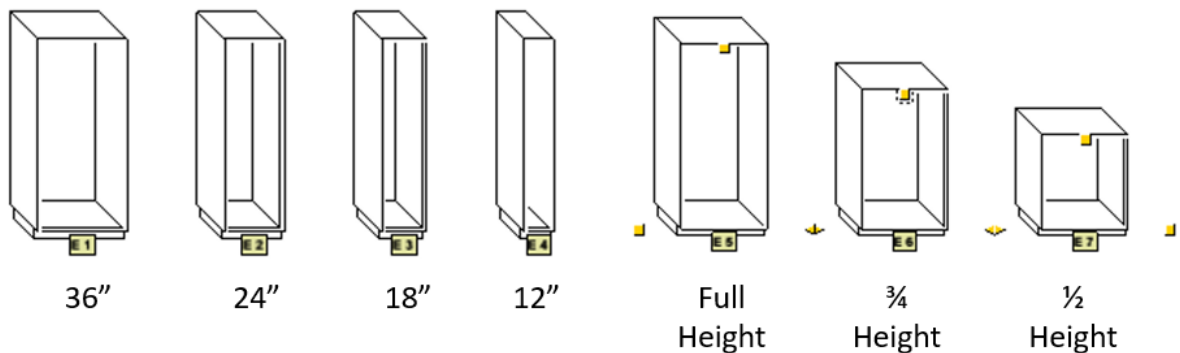
- Instruction and number tags installed on all front doors
- Adjustable floor levelers
- Finished with a high quality powder coat paint
- Standard trim included with each locker order
- Standard installation hardware is included
- Lifetime warranty on the structural frame
- One year limited warranty on refrigeration units
- Two year limited warranty on electrical components and wiring
- Rear wall trim package available (PT)
- Supplied with standard push button locks on front doors
- Keyed different with master key for evidence retrieval (NPT)

Options

- Mesh rear doors are available on PT lockers
- Mail slots
- Custom colors
- Refrigerator for temperature sensitive evidence
- ControLoc™ (electronic access and audit technology)

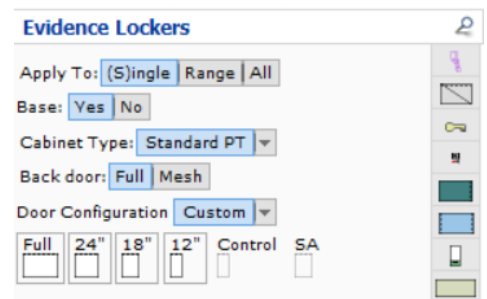
Structure

- Available in 4 Widths: 36", 24", 18", and 12"
- Available in 3 Heights: Full (82"), $\frac{3}{4}$ (63.282"), and $\frac{1}{2}$ (44.562") [Includes Base]
- Base (recommended) adds 4" to height



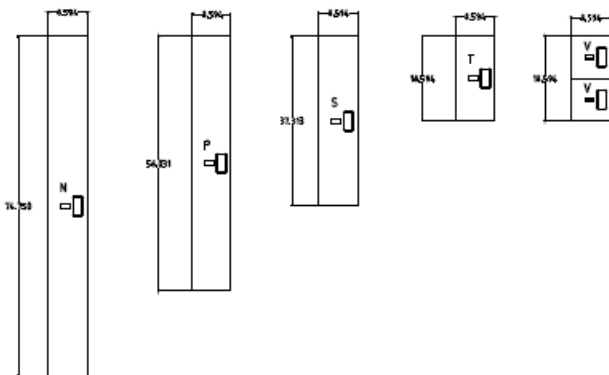
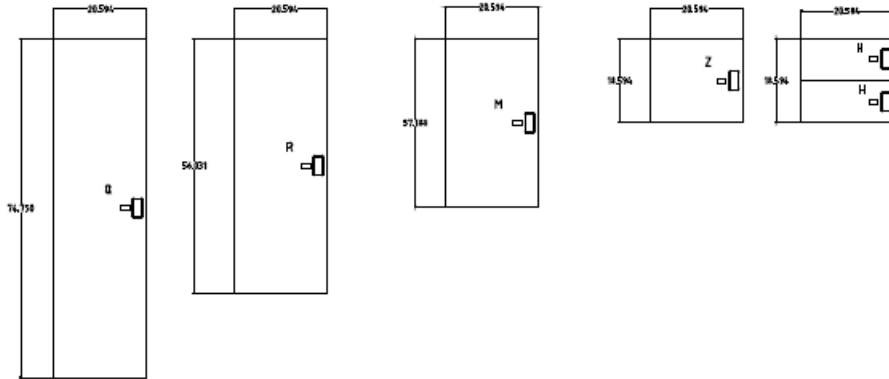
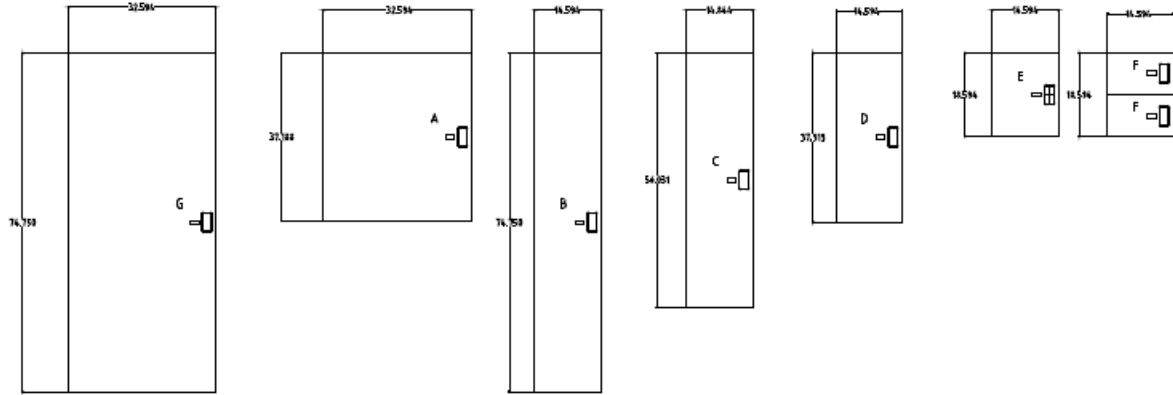
Locker Bases

- Locker bases are recommended
- Lockers can be provided with or without a base
- Model numbers ending in "NB" have "No Base"
- Bases are four inches tall
- Bases required for Refrigerators



Door Sizes

- Seventeen (17) basic compartment/door sizes are available for custom door configurations.
- "A" doors and doors in 18" cabinets can only be hinged on left side.



Trim Kits

- Trim kits are included with each PT locker bank.
 - Trim kits include both front and rear trim and hardware.
- Trim kits are NOT included with NPT locker banks.
- Two (2) vertical kits (one for each side; lengths are calculated by Configura)
- One (1) horizontal kit (top)
- Lengths are calculated by Configura.
- Trim kits may have multiple pieces to cover necessary length
- Trim kits include all hardware required
- Unless otherwise specified, the front trim set is designed for installation when the locker bank front face is installed flush with the wall surface.
- Trim retainer strips attach to top and side of lockers; “L” shaped trim piece is tapped into retainer
- Trim is powder coated to match lockers

Mail Slots

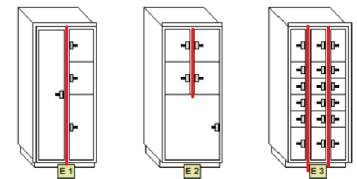
- Mail Slots can be placed on any door with a width > 20”
- Mail slots can be placed on any side of the cabinet
- Any number of doors can have a mail slot

Custom Drawn Locker Considerations

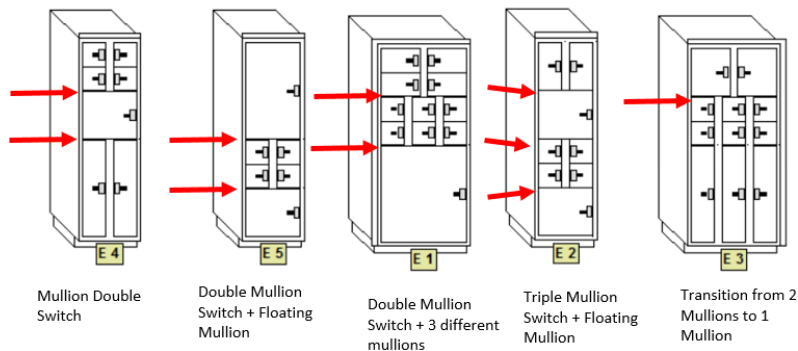
- FF, VV, and HH doors cannot be placed in the bottom of a locker

Mullion

- Mullions are the vertical strips that separate doors.
- Mullions must always attach to the bottom or top of a locker -they cannot float in the middle of a locker.
- There can only be a single mullion switch in a locker frame.
- Allowed single transitions are none to one or none to two.
- A single transition involving 1 mullion to 2 mullions is NOT allowed



Mullions in red

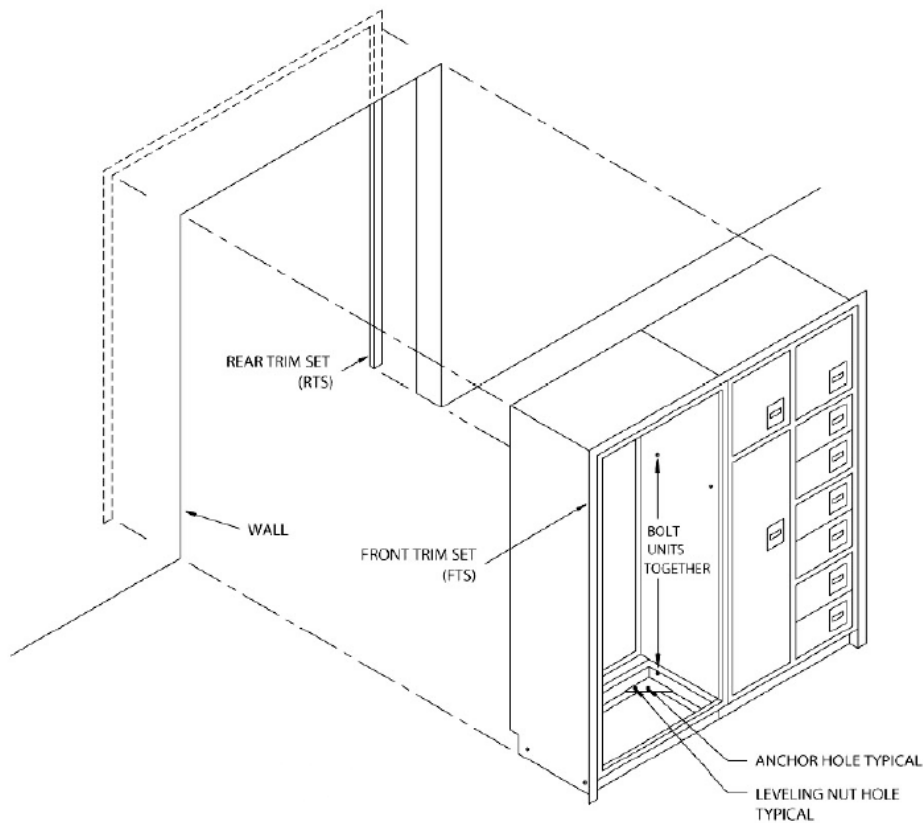


Installation Considerations

- Lockers are typically ganged together to form a “bank” of lockers.
- Recommended opening in wall to be 2” wider and 1” higher than overall size of locker bank**

KEY POINT FOR GENERAL CONTRACTOR

- Each locker contains all of the required hardware for a standard installation of that locker.
- Bolt holes are provided in order to bolt the lockers to each other.
- Bolt holes are provided for anchoring to floor. (See Service Manual for bolt patterns.)
- Leveling and anchor points are located under floor pans at bottom of lockers.
-



Site Considerations

- Floors level and walls square

Available Collateral

The following items are on SpaceNet:

- [Evidence Storage Sales Brochure](#)
- [Owner’s Manual – Evidence Locker Systems](#)
- [CSI Product Specification - 105113 – Evidence Lockers](#)
- [Service and Installation manuals](#) (various available)

EVIDENCE REFRIGERATION

Evidence storage solutions include refrigeration for unattended refrigerated evidence drop off. **They are available for both the PT and NPT processes.** See Evidence Lockers for description of PT and NPT processes. Refrigerator is half height, meaning a half cabinet (41.5") can be stacked on top to match dimensions of a full height evidence cabinet.

Standard Features

- Modular construction, units shipped fully assembled and ready to use.
- Fridge dimensions are 41.44"H x 36"W x 24"D
 - Fridge doors protrude 2 inches in front and rear for a total depth of 28"
- Base adds 4"
- Stainless steel doors on front and rear protrude 2 inches each to give total depth of 28 inches.
- Insert nuts in top of refrigerator to secure half cabinet
- Insert nuts on sides of refrigerator to gang to adjacent EDL cabinet
- Stainless steel interior and exterior walls
- Maintains preset controlled temperature of 38°F to 42°F (3°C to 5.5°C)
- Digital temperature display
- Audible alarm preset at 32°F (Low) and 48°F (High)
- Keyless locking system prevents re-access by depositor to secure evidence
- Available in Pass-Thru and Non Pass-Thru models
 - Pass-Thru model has lever style handle on back door
- Available with 6 or 10 door insert
- Magnetic seal on main doors
- Dedicated 10 amp branch circuit
- Chamber cooling provided via cold (forced) air circulation
- Concealed condensate heaters around each door opening
- 115VAC, Single Phase, 60Hz
- Automatic defrost
- ETL Listed
- Number tags installed on all front doors
- Adjustable floor levelers in base
- Wall trim packages included on Pass-thru models
- All installation hardware included
- Lifetime warranty on the structural frame
- One year warranty for defects in material or workmanship
- Five year warranty for all parts (with exception of gaskets, lighting, and refrigerants)



Options

- Number of compartments inside full refrigerator can be selected.
- Available compartments: 6 or 10

Structure

- Refrigerators are 36" wide, 41.11" tall and 24" deep
- Bases are 36" wide by 18" deep

Electrical Connections

- Electrical cables are 8 feet in length

Site Conditions

It is always important to provide a thorough review of the site's basic characteristics:

- Are floors and walls level and square?
- Will lockers be pass-thru?
- Will lockers be non-pass-thru?
- Where will electricity come from (for refrigeration units)?

NOTICE: Non-Pass-Through units have a rear door that is fastened. Since refrigerators must remain at least 2" away from back wall for venting purposes this will NOT affect the overall depth required for runs of lockers with refrigerators. The rear door can be flush against the wall as there is enough clearance around the rest of the refrigerator for proper air flow.

Configura (Draw and Price)

The best way to draw and price an evidence refrigeration system is by using the Configura software.