

# STORAGE

Protect. Preserve.



Anthropology & Paleontology



Archaeology



Archival Storage



Artifacts



Cartography



Entomology



Ethnology



Geoscience



Herbarium



Herpetology



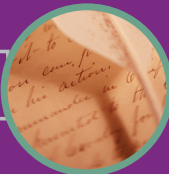
Ichthyology



Mammalogy



Manuscripts



Ornithology



Textiles



*"This storage system enhances our ability to procure collections. Collectors are very sophisticated when it comes to gifting. They want a safe harbor for their collections and high-density mobile storage enhances these transactions."*

—Jim DeYoung, Senior Conservator  
Milwaukee Art Museum  
Milwaukee, WI

# Collection

**COLLECTIONS ALREADY HAVE A PLACE IN HISTORY. OUR STORAGE SOLUTIONS ENSURE THEY'LL HAVE ONE IN THE FUTURE.**

Collection care. Arguably the single-most important undertaking for museums both large and small. As collections continue to grow, efficient storage space and optimum convenience and control have become primary needs in today's preservation strategies.

At Spacesaver, we fully recognize that the most significant factors influencing your choice in storage systems are conservation, preservation, and security. To ensure these qualities, we offer you a single source for all your storage needs. With our industry knowledge and expansive product offering, you won't find a more effective provider of collection-care systems.





# SECURITY



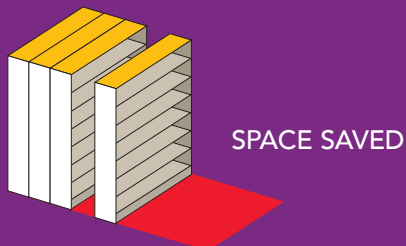
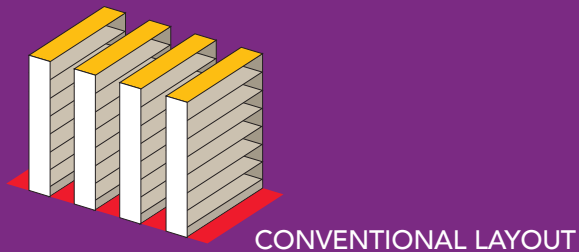
*"By reducing storage space by fifty percent  
and enhancing collection safety,  
mobile storage was an obvious solution."*

—John Rutchick,  
Director of Facilities Management

Mystic Seaport:  
The Museum of America and the Sea  
Mystic, CT



## THE SPACESAVER ADVANTAGE.



*By mounting storage units on wheeled carriages that run on tracks, Spacesaver systems eliminate the need for space-wasting fixed aisles. You simply push a button on our powered systems or turn the handle on our manual ones to open an aisle where you want it. The result is 100% greater storage capacity or 50% space reduction.*

# Preserving

## HELPING PRESERVE ONE OF THE WORLD'S MOST PRECIOUS GEMS: FLOOR SPACE.

Sooner or later, institutions large and small experience a lack of storage space. Adding on to existing structures, expanding to other nonworking areas, or even leasing off-site storage are all viable options; however, each presents its own set of drawbacks and challenges. That is why we developed space conservation, Spacesaver's innovative approach to solving storage needs.

As the innovator of high-density mobile storage systems for museums, repositories, depositories, archives, and research collections, we're helping to utilize millions of square feet of available floor space. Spacesaver mobile storage systems allow clients to take advantage of nonproductive, fixed-aisle space used in traditional stationary-storage applications.





# SPACE





*"I didn't ever think Spacesaver systems provided space for two million objects, but they did."*

—Bill Sisson, Chief of Curatorial Division  
State Museum of Pennsylvania  
Harrisburg, PA

# Collection

## **SYSTEMS SO ADAPTABLE, THEY CAN EVEN PROTECT YOUR REPUTATION.**

Spacesaver's line of high-density mobile storage systems offers the design features and flexibility required to safely secure your collections and make room for future expansion. We have a proven history in helping museums preserve their individual collections and, equally important, their good standing in the community.

The inherent flexibility of our systems allows for custom-designed units to be built to specific requirements. The overall dimensions and layout of each system will depend on a variety of factors: the size, shape, and weight of the objects being stored; access and retrieval frequency; type of housing configured into the mobile storage system; existing architectural constraints; and security concerns. However simple or complex your needs, the Spacesaver team of museum specialists can provide a free, in-depth, space and storage analysis to account for every item.

Rest assured, we'll help turn this otherwise long and complex process into a manageable and successful one.

Document Storage



Bulk Racks

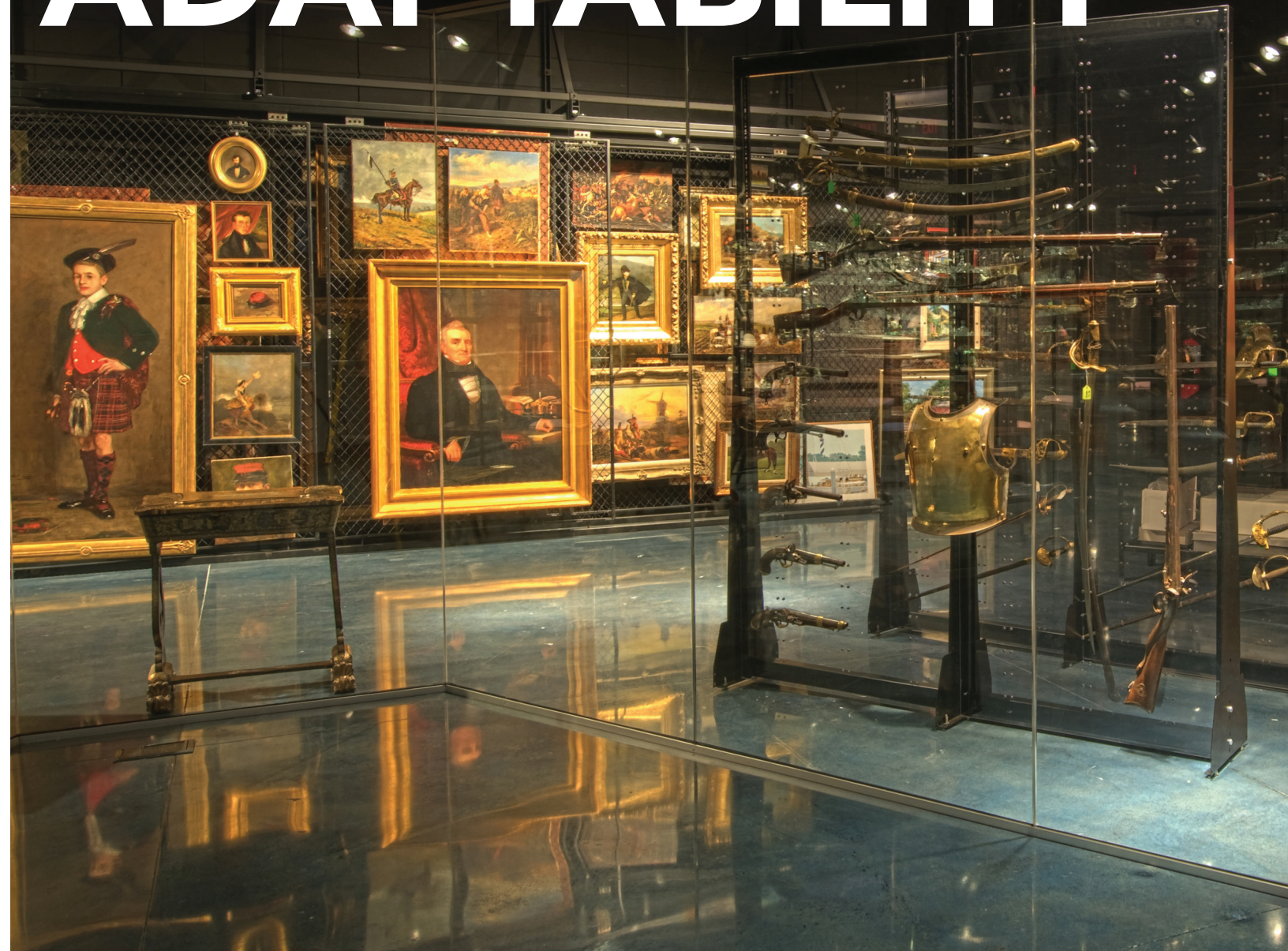


Flat Files





# ADAPTABILITY



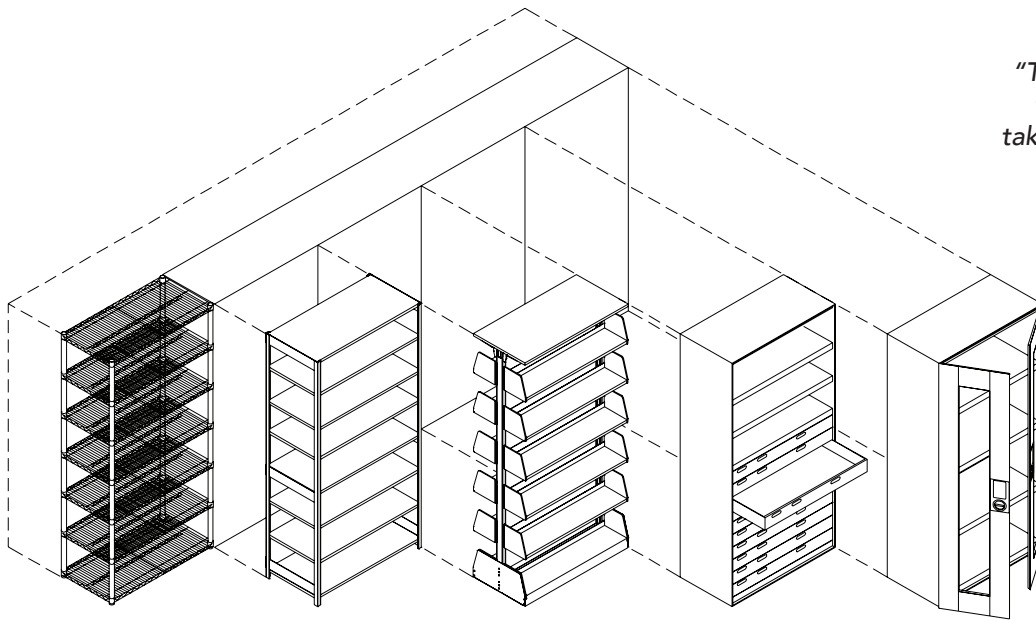
Suspension Glides w/Shelves or Drawers

Document Shelving/Rare Books

Closed Cabinets w/Trays







*"They were there, totally involved in the entire process. Everything was taken care of and it went seamlessly."*

—Nancy Kirkpatrick,  
Director of Museum Services  
Asian Art Museum  
San Francisco, CA

Our five primary storage units are interchangeable within the structure and can be customized to meet your unique needs. Those units include: Wire Shelving, 4-Post Shelving, Cantilever Shelving, Specimen Drawers and Storage Cabinets. You can choose and configure between these options within the same housing unit to best accommodate the collection material, specimen or being stored. System carriages can be made to your desired width and length.

# Engineered

## STORAGE HOUSING DESIGN OPTIONS.

The nature of the stored material in your collection will determine the storage housing used and the final configuration of the overall system design. Each component offers its own form of protection to help guard against environmental factors (including human contact) that can lead to eventual deterioration or irreparable damage to your collections. Not to worry, though, Spacesaver state-of-the-art systems are scientifically designed and engineered to provide maximum conservation and security.

Lateral Sliding Racks



Shelving for Any Collection



Herbarium Storage







# PROTECTION

Trays and Drawers



Pullout Racks for Art/Textiles



Cabinets w/Glass Doors





# Preservation



## **SECURITY, PRESERVATION & CONSERVATION OF COLLECTIONS.**

The conservation of museum collections is predicated upon the successful execution of preservation tactics. One of the single greatest decisions made by a conservator or curator is the selection of a storage system designed to protect items from human and environmental sources.

Inherent in the design features of Spacesaver's turnkey storage technology is the assurance of preservation and maximum accessibility. From our exclusive field-tested safety features to our unique storage design attributes intended to preserve even the most valuable objects, Spacesaver addresses each preservation issue with solutions developed exclusively for museums and archives.





TACTICS





Spacesaver Corporation  
1450 Janesville Avenue  
Fort Atkinson, WI 53538-2798  
800.492.3434  
[www.spacesaver.com](http://www.spacesaver.com)