

ActivRAC[®] 7P

MOBILIZED STORAGE SYSTEM


INFO SHEET

MOBILE SYSTEMS

Mobilize your storage. Maximize your space.

Safe, space efficient, and easy to use. You truly can do more with less, using Spacesaver[®] **ActivRAC[®] 7P Mobilized Storage System.**

The simple fact is everyone needs more space for storage. The **ActivRAC 7P** powered mobilized storage system maximizes storage capacity by recovering idle aisle space while providing 100% accessibility with a convenient powered control operation.

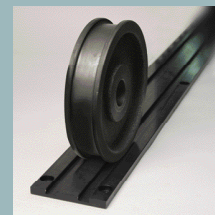
The **ActivRAC 7P** flexible system designs will meet the most demanding industrial requirements.  system listed. The innovative design allows you to mobilize your existing racking or industrial shelving and install the system on your existing floor.

STANDARD FEATURES

- 7,000 lbs. capacity per carriage/wheel section
- System operation – carriage mounted control or optional infrared or RF remote control
- Unleveled, surface mount or recessed rail options
- Safety features – Photo Sweep[®], aisle entry sensors, and LED indicators to signal status of the mobile system
- Designed to work with existing racking, shelving, and drawer systems
- Multiple synchronized motors to provide smooth, even movement. Number of motors varies with load, thereby, providing the most cost effective design
- Carriage design capability permits virtually unlimited carriage layout configurations



POWERED OPERATION
with Touch Pad Control for ease of use and security.



RAIL DESIGN OPTIONS
Unleveled, surface mount or recessed rail.



STORAGE CONFIGURATIONS
Accommodates various pallet racking and shelving.



Storage Solved[®]



Spacesaver[®] Corporation is a division of KI.

800.492.3434 | www.spacesaver.com | ssc@spacesaver.com

KI and Spacesaver are registered trademarks of Krueger International, Inc.

© 2015 KI and Spacesaver Corporation. All Rights Reserved. ActivRAC7P_0215_info