

The Frazier Advantage

Manufacturing...

FRAZIER's unique network of manufacturing facilities and our "FLEX MANUFACTURING SYSTEM" (FMS) enable us to handle a high volume of projects without disrupting or compromising work in progress.

FMS utilizes precision tooling and automation to manage a much higher volume of projects at the lowest possible cost.

Quality...

At FRAZIER, quality is designed into the product. It's guaranteed through the use of the latest automatic welding techniques (AWS approved); and an in-line painting and finishing process unmatched in the industry for coverage and durability.

Further, each manufacturing location has a FRAZIER employed, dedicated Quality Control Manager whose sole responsibility is monitoring product quality.

Service...

On time and within budget are far more than just promises at FRAZIER. **They are a commitment!** From start to finish, FRAZIER Project Management personnel, working closely with all client, contractor and consultant staffs, ensure everyone's total satisfaction on every project we undertake.

Competitive Pricing...

For many years, the perception was that structural steel rack was far more expensive than roll-formed. This may have been true at one time.

Today, however, FRAZIER's automated manufacturing facilities, new processing techniques, the competitive price of U.S. mini-mills and FRAZIER's integrated manufacturing, allow utilization of superior structural steel products for only pennies more than inferior roll-formed. In fact, in the long run, structural steel rack may be less expensive than the cheaper quality products because continual damaged part replacement is not necessary.

Frazier's National Fabrication Network:

Barron, WI
Lamar, SC
Long Valley, NJ
Mexicali, Mexico
Milton, PA
Monterrey, Mexico

Pocatello, ID
Portland, TN
Pottsville, PA
Trenton, Ontario, Canada
Waterloo, NY

FRAZIER®

Frazier Industrial Company

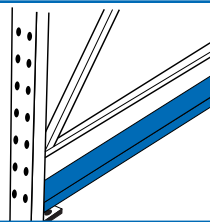
Fairview Avenue • Long Valley, NJ 07853
 800-859-1342 • 908-876-3001 • Fax 908-876-3615
 Email: frazier@frazier.com • www.frazier.com



Accessories/Options

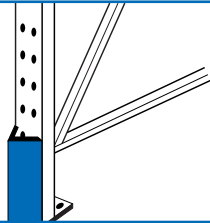
Rub-Rail

Heavy horizontal impact channel used at floor level to protect upright or frame from vehicle or pallet damage.



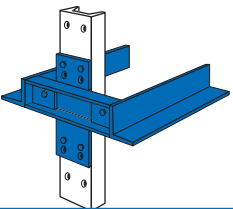
Post Protector

Heavy structural steel protector affords added security against abuse from handling equipment.



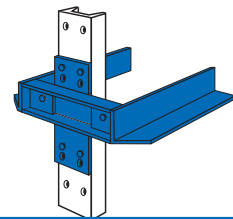
Space Saver Arm

When vertical space is an important consideration rails can be mounted at the same height as support arms. This saves 3" on height for each rail.



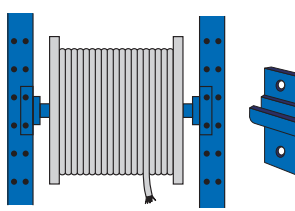
Mitered Entry

Sharp corners on support rails can be mitered off for increased safety. This may be used at lower levels where hand picking is done.



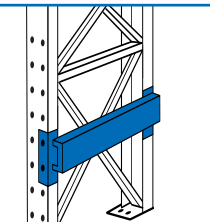
Reel Support Bracket

Easily converts standard rack to reel-on coil storage facility. (Sold in pairs only. Axles not included.)



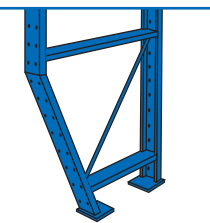
Row End Protectors

Structural steel channels used at the end of each aisle to serve as a guard preventing frame damage.



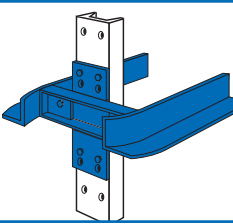
Slant-Back Frame

For areas where space restrictions may create a hazard for trucks, the Frazier slant-back frame can provide the necessary margin of safety.



Flared Entries

Rails can be flared out at the entry point for easier, faster pallet positioning, safer handling and less damage.



DRIVE-IN/ DRIVE-THRU Structural Steel Storage Racks



FRAZIER®



Structural vs. Roll-formed

Strength matters.

We made an important, fundamental decision when developing our manufacturing capabilities, to use structural steel for our rack systems instead of inferior roll-formed products.

Extensive testing has proven that structural steel provides these important advantages:

- High abuse resistance — structural is heavier, with reinforced channel corners and thicker gauge metal columns.
- If damaged, can be repaired in place.
- Repaired uprights maintain 100% load-bearing capacity.
- Structural integrity maintained where rack is constantly being dismantled and relocated.
- Consistent adherence to precise manufacturing specifications.
- All this, at a competitive price.



Why Choose Drive-In/Drive-Thru?

Adjustability — Can maintain 1" adjustability on 3" and 5" beams and 1" adjustability at 75% of locations with 4" shelf beams.

Durability — Made to last longer; designed to hold up better; finished to look better, longer.

Warranty — Unlimited two year warranty against fork truck abuse is unmatched in the industry.

Experience — Over 50 years in the research, design, engineering, manufacturing and construction of structural steel rack facilities.

Bolted Connections — Strong at 360° and guaranteed against dislodgement even from upward vehicle or pallet impact.

Amazing Design

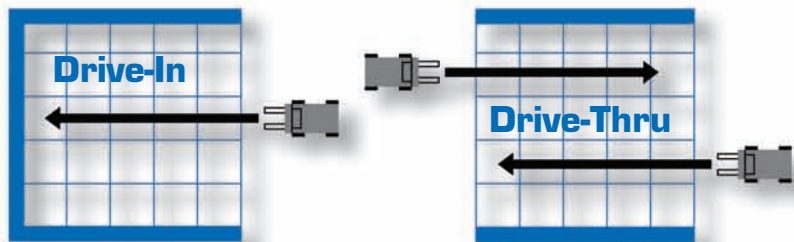
Drive-In/Drive Thru rack systems are the most complicated storage systems to design, engineer and manufacture. Yet most companies and rack manufacturers overlook this complexity when designing the overall system.

Not Frazier. our expert designers and engineers offer many advantages:

- Most modern, three-dimensional computer-aided custom design and manufacturing technology.
- Advanced Auto-CAD analysis and detailing system.
- Complete line of special options and accessories.
- Conveniently located, nationwide manufacturing facilities.
- Specialists in freezer/cooler applications.
- Two-year unlimited warranty against fork truck damage.



Driving is Easy with Frazier



Drive-In and Drive Thru are free-standing, self-supporting structures that comply with the most stringent and demanding safety standards.

Drive-In Advantages:

- High density – no other form of storage provides greater capacity in the existing cubic space.
- Minimized pallet cost per square foot.
- Eliminates need for expensive warehouse expansion.
- Major cost savings utilizing existing lift equipment.
- Maximum productivity with Last-in, First-Out (LIFO) inventory control system.

Drive-Thru Advantages:

- Similar to Drive-In, except that vehicles can access the rack from either side.
- Pallets can be stored from one side and retrieved from the other for First-In, First-Out (FIFO) inventory control.

