



CARGO RACK

Storage Solutions For Military Cargo & Bulk







BAN-AIR® CARGO RACK

The BAN-AIR concept is centered on maximizing storage capacity and reducing under-utilized storage space to effectively BAN the wasteful storage of AIR: 'BAN-AIR' The CARGO RACK has been custom designed for the efficient storage for MILITARY CARGO & BULK.

- 463L
- ISU90
- TRICON
- QUADCON
- BICON
- ALL TYPES OF BULK CARGO
(e.g crates, pallets & other oversized items)





INSTANT ACCESSIBILITY FOR MAINTENANCE & READINESS FOR ALL LOADS. ALWAYS



BAN-AIR Storage Systems is a leading manufacturer and turnkey supplier of high quality, durable storage and handling solutions. With over TWENTY YEARS of experience and HUNDREDS of installations completed worldwide, BAN-AIR has developed a unique product offering to provide highly versatile and effective solutions to address any storage problem.



PROBLEM



❌ **Poor space utilization - No vertical storage**

❌ **Poor readiness = Poor deployment capability**

❌ **Labor intensive handling**

❌ **Drain on warehouse potential**

❌ **Exposed Containers / Crates = materials damaged by weather & the environment**

❌ **Limited expansion potential for increased operations**



BEFORE



AFTER

ALL LOADS PROTECTED & INSTANTLY ACCESSIBLE



SOLUTION



UNIVERSAL SINGLE



UNIVERSAL DOUBLE



LAY-DOWN



PUSH-BACK



TRICON



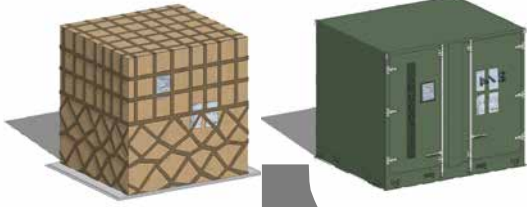
BICON

- ✓ Enable **CARGO** and **CONTAINER** stacking
- ✓ Maximize **CUBIC SPACE**, rather than **FLOOR AREA**
- ✓ Facilitate **STRATEGIC** inventory process
- ✓ **WITHSTAND** years of demanding service

- ✓ Utilize **EXISTING** outdoor yard space
- ✓ **ELIMINATE** the need for dunnage blocks
- ✓ **SAVE MONEY**
- ✓ Enable **immediate access** to any pallet for **RAPID DEPLOYMENT**

463L

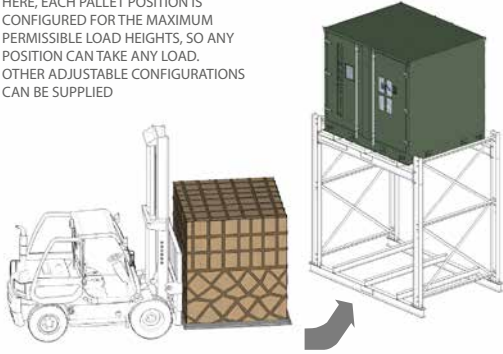
ISU90



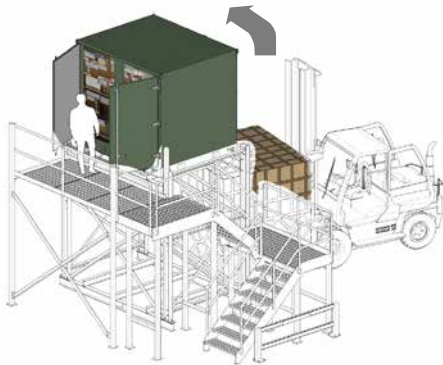
SINGLE BAY 2 PLATFORMS HIGH



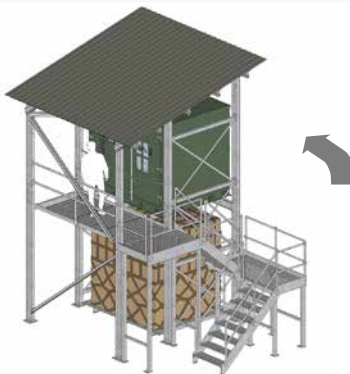
HERE, EACH PALLET POSITION IS CONFIGURED FOR THE MAXIMUM PERMISSIBLE LOAD HEIGHTS, SO ANY POSITION CAN TAKE ANY LOAD. OTHER ADJUSTABLE CONFIGURATIONS CAN BE SUPPLIED



SINGLE BAY 2 PLATFORMS HIGH WITH INSPECTION WALKWAY



SINGLE BAY 2 PLATFORMS HIGH WITH INTEGRATED ROOF



ENABLE CARGO AND CONTAINER STACKING whether empty, or fully loaded with cargo.

USE EXISTING OUTDOOR YARD SPACE

Maximize CUBIC SPACE, rather than FLOOR AREA

Eliminate need for dunnage blocks

Facilitate strategic inventory process

Enable immediate access to any pallet for rapid deployment

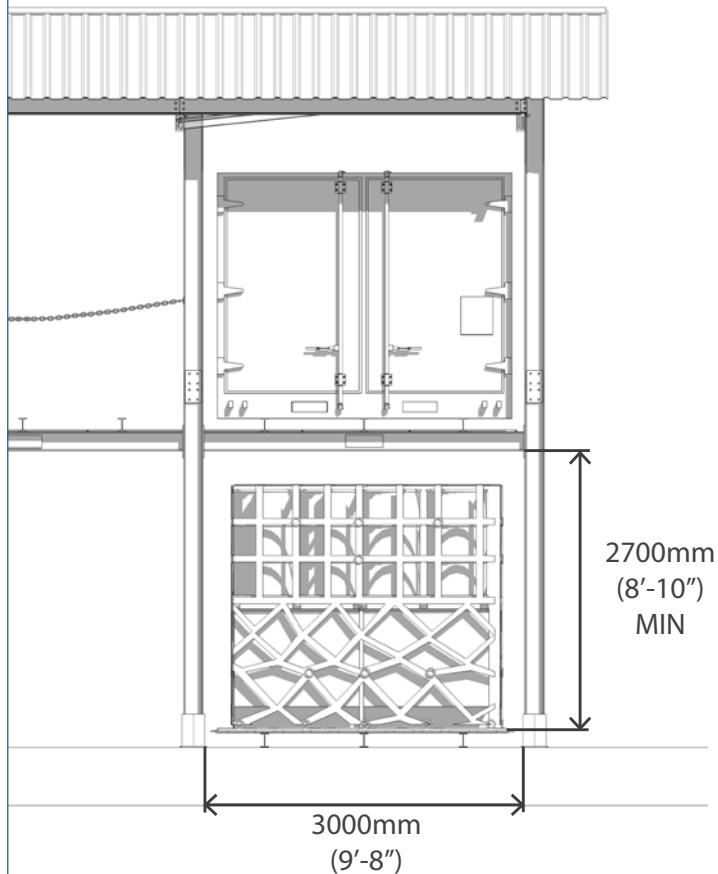
Withstand years of demanding service.....AND SAVE MONEY

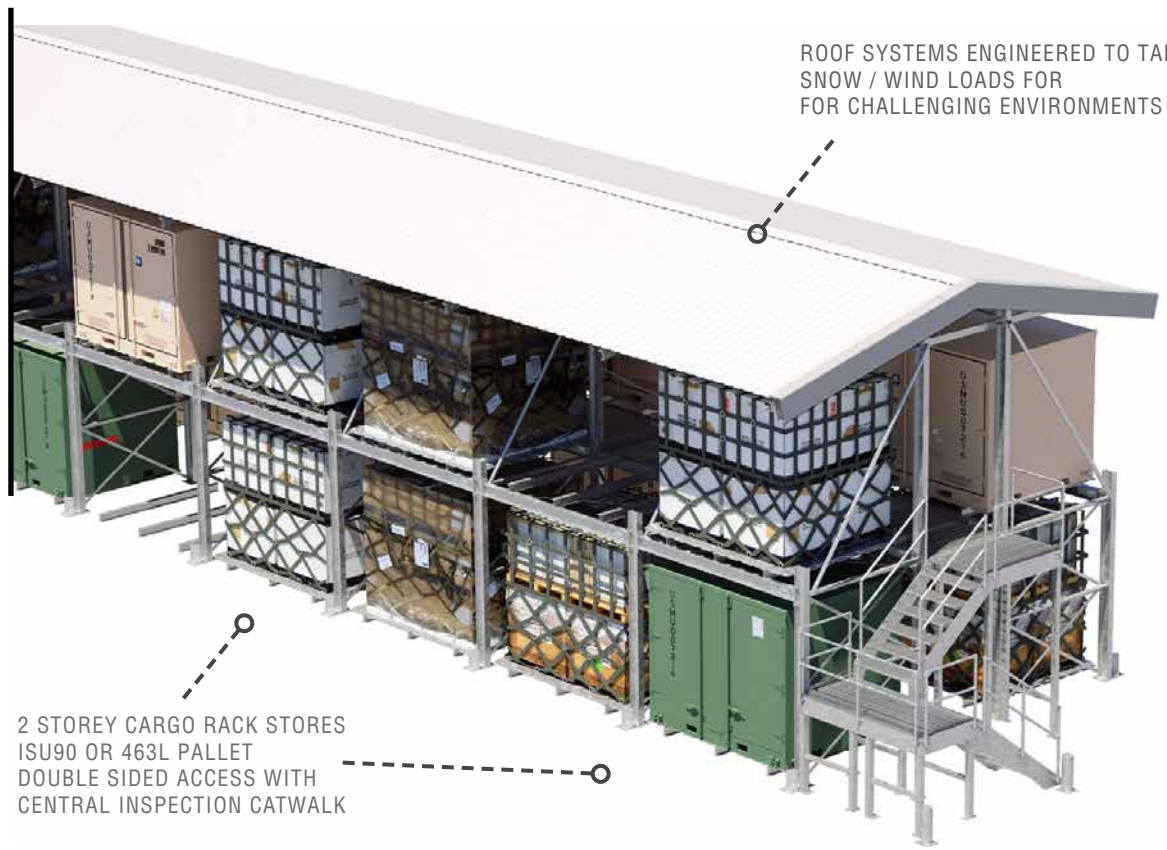


UNIVERSAL

MILITARY CARGO RACK

Flexible Storage Solutions For Cargo Applications





ROOF SYSTEMS ENGINEERED TO TAKE SNOW / WIND LOADS FOR FOR CHALLENGING ENVIRONMENTS

2 STOREY CARGO RACK STORES ISU90 OR 463L PALLET DOUBLE SIDED ACCESS WITH CENTRAL INSPECTION CATWALK

BAN-AIR MILITARY CARGO RACK is custom designed for the strategic & efficient storage of air cargo, specifically to store both 463L ('ALOC') and ISU90 containers

Optional Universal Base universal base allows for installation on Existing yards, including possibility of asphalt or even crush stone (subject to engineering requirements)



ROOF SYSTEMS ENGINEERED TO TAKE SNOW / WIND LOADS FOR FOR CHALLENGING ENVIRONMENTS

CENTRAL INSPECTION WALKWAY

SINGLE OR DOUBLE ROW ACCESS

GROUND LEVEL FORK ENTRY BARS

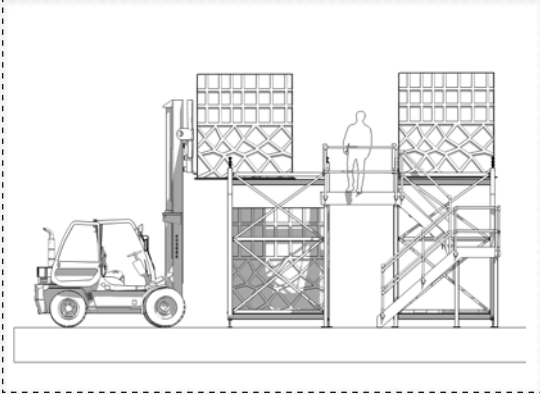
2 STOREY STAIRWAY (DOUBLE SIDED HANDRAIL)



BULK STORAGE



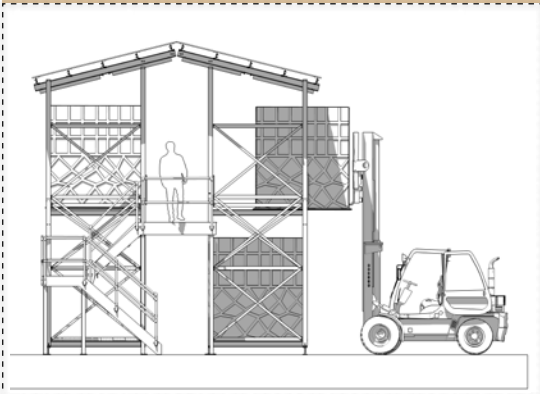
BACK-TO-BACK WITH CENTRAL WALKWAY



INTEGRATED ROOF



CENTRAL INSPECTION WALKWAY WITH INTEGRATED ROOF



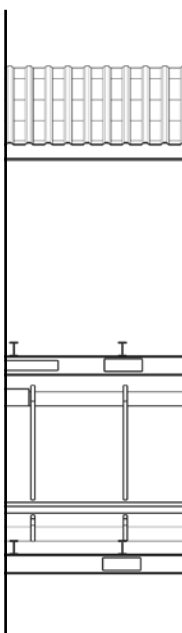
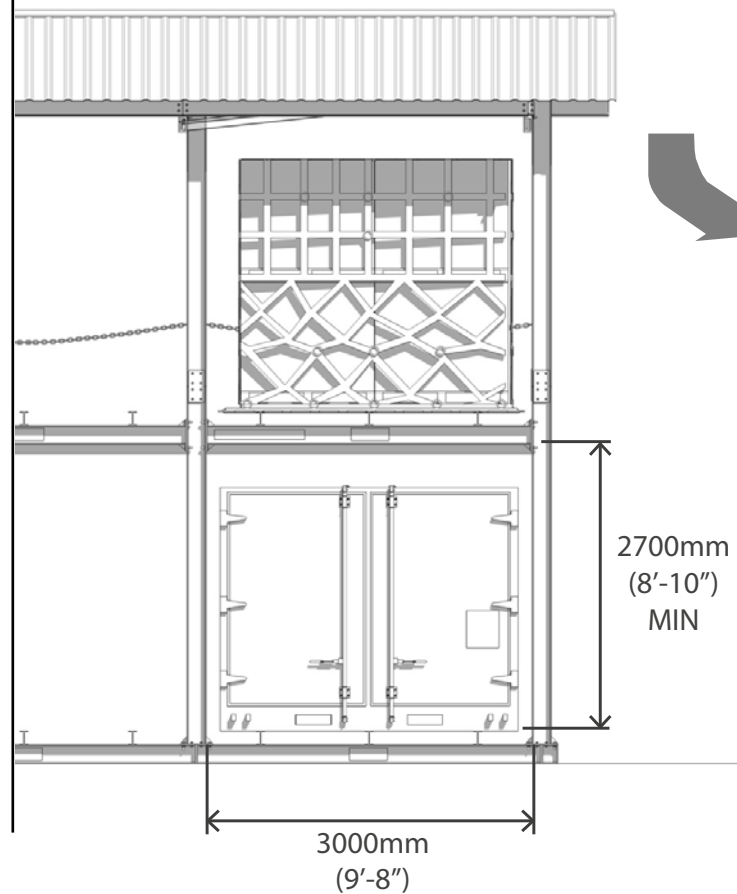
LAY-DOWN

MILITARY CARGO RACK

Flexible Storage Solutions For Cargo Applications



8ft HEIGHT CARGO



- ✓ **ENABLE CARGO AND CONTAINER STACKING**
whether empty, or fully loaded with cargo.
- ✓ **USE EXISTING OUTDOOR YARD SPACE**
- ✓ **Maximize CUBIC SPACE**, rather than FLOOR AREA
- ✓ **Eliminate** need for dunnage blocks
- ✓ **Facilitate strategic** inventory process
- ✓ Enable immediate access to any pallet for **rapid deployment**
- ✓ Withstand years of demanding service.....**AND SAVE MONEY**

❌ ASSET DEGRADATION



❌ WASTE

❌ MESS



BAN-AIR LAYDOWN CARGO RACK is designed for the strategic & efficient storage of smaller height loads e.g for crates, tire stillages, razor wire rolls, pickets, sandbags, plywood etc

(x4 US Govt. wooden pallets per 463L)



ORGANISED READINESS



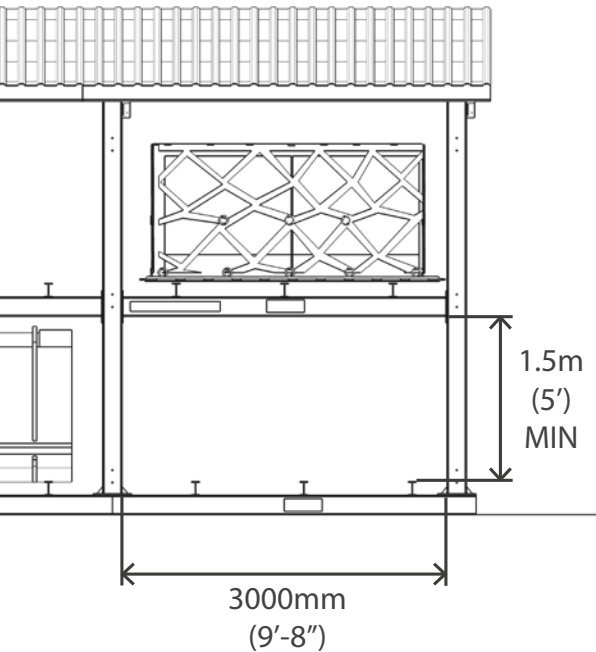
EFFICIENT



TIDY



5ft HEIGHT CARGO





MOBILE CARRIAGES

Our **TRICON** rack can be installed on **MOBILE CARRIAGES** to allow for **DENSE STORAGE** within the same footprint.

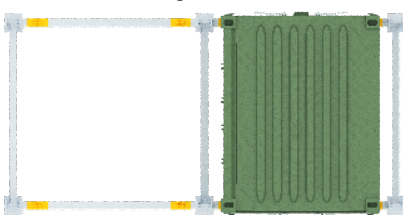


INSIDE

TRICON CONTAINER



TRICONS rest on each level of storage on **custom steel lugs** which engage by design with the container's four corner castings. This provides **horizontal stability** to every TRICON in storage, improving **safety** through design in case of rack impacts, and facilitating mobile rack applications

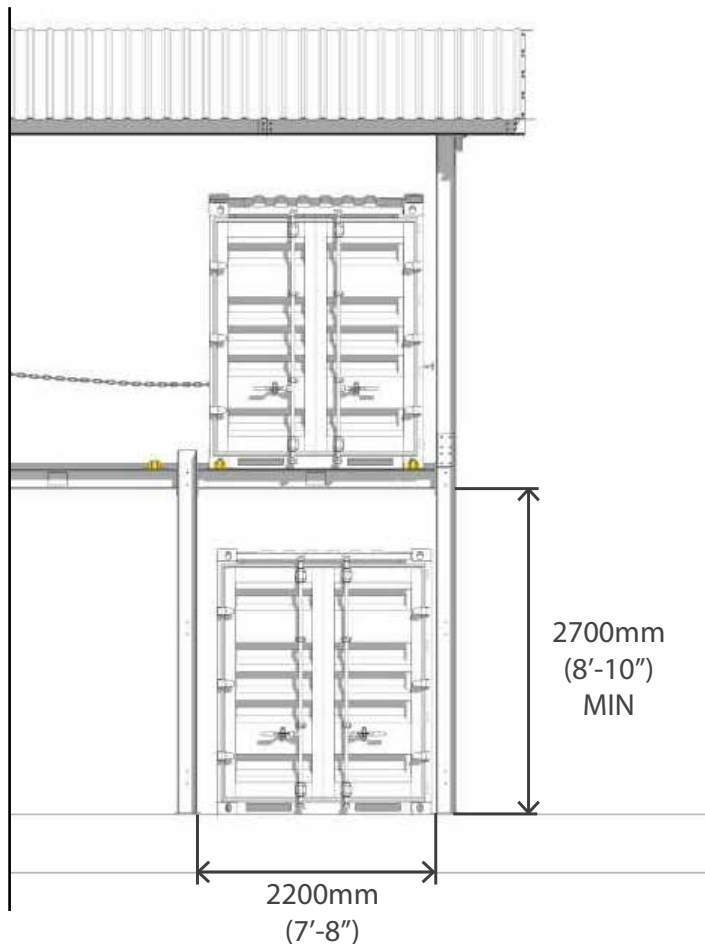


Top View

TRICON

MILITARY CARGO RACK

Heavy, bulky containers organized and protected in environmentally controlled building.





7.3m
(24')

(TYPICAL AISLE)



✓ MAXIMUM SPACE UTILIZATION

✓ EFFICIENT

✓ MAXIMUM READINESS

✓ TIDY

OUTSIDE 





Heavy duty castors
on each platform level
allow the push back of
ISU90 / Cargo positions



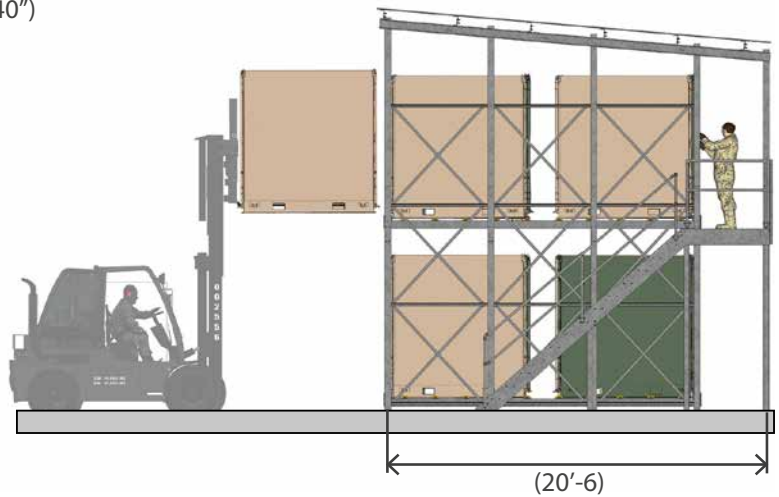
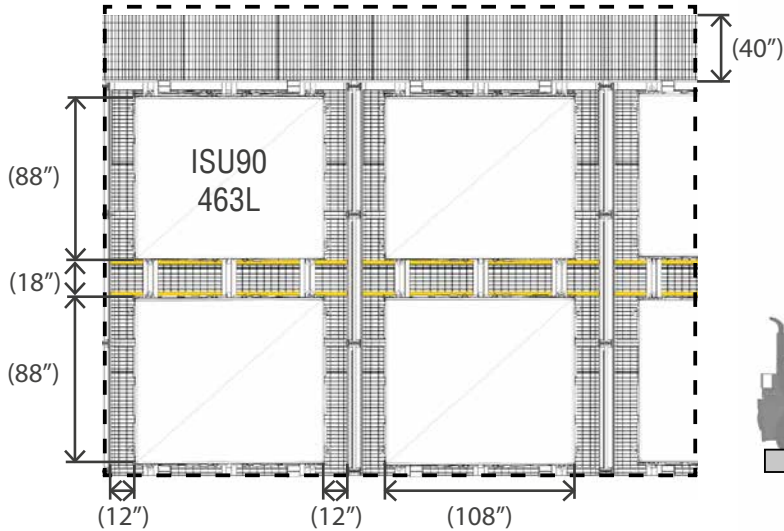
PUSH BACK

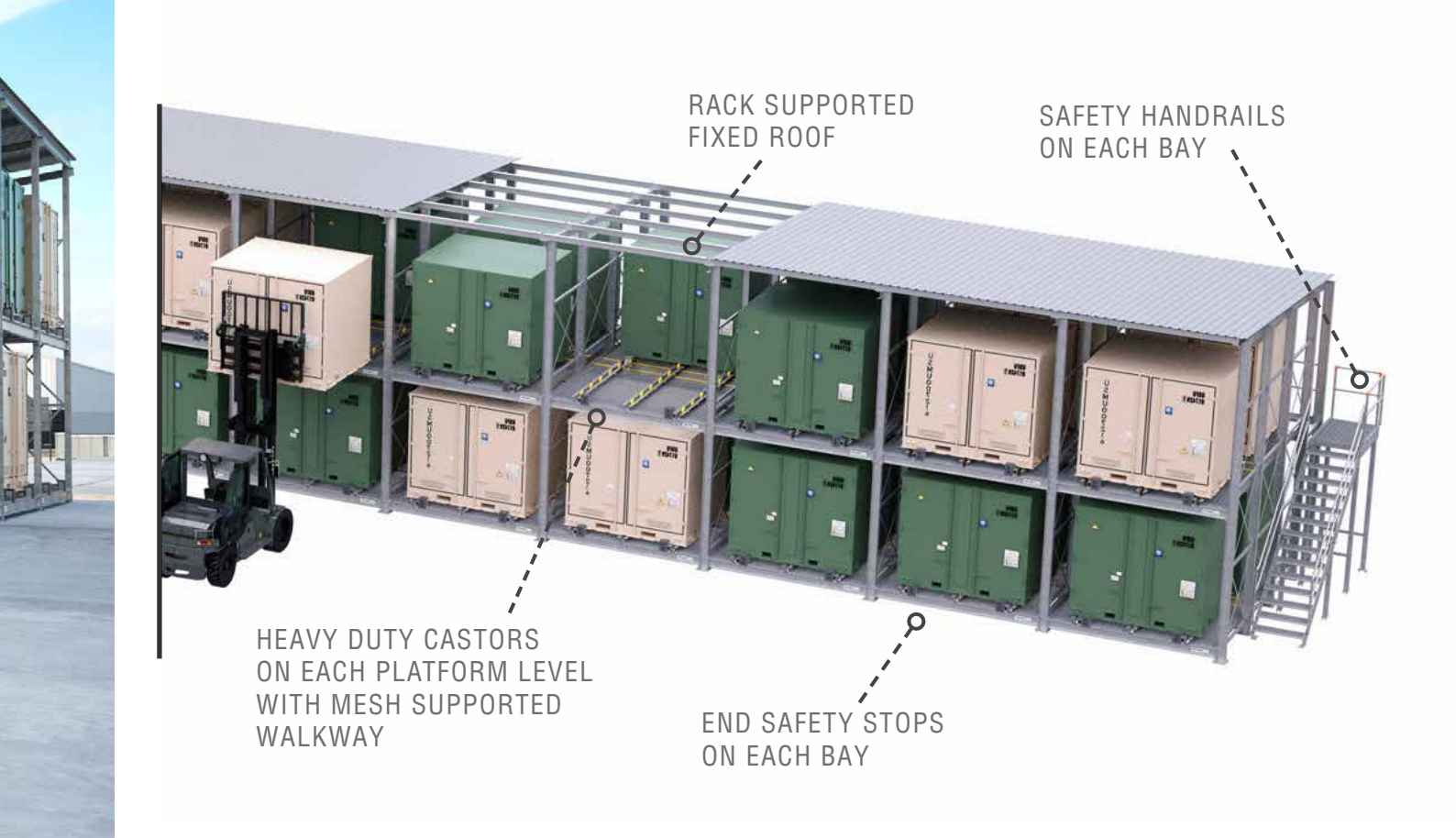
DOUBLE DEEP CARGO RACK

Perfect for dense storage where space is constrained



EXISTING STRUCTURE





RACK SUPPORTED
FIXED ROOF

SAFETY HANDRAILS
ON EACH BAY

HEAVY DUTY CASTORS
ON EACH PLATFORM LEVEL
WITH MESH SUPPORTED
WALKWAY

END SAFETY STOPS
ON EACH BAY

- ✓ DURABLE, HARD-WEARING DESIGN FOR TOUGH APPLICATIONS
- ✓ IDEAL FOR SITING AGAINST EXISTING STRUCTURE
- ✓ INDOORS OR OUTDOORS
- ✓ ISU90 CONTAINERS ORGANIZED, PROTECTED AND READY



**DENSE STORAGE FOR THE
TOUGHEST ENVIRONMENTS**



BICON

DOUBLE DEEP CARGO RACK

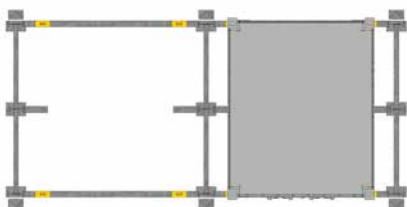
Flexible Storage Solutions For Cargo Applications

BAN-AIR BICON CARGO RACK is custom designed for the strategic storage and management of BICON containers.

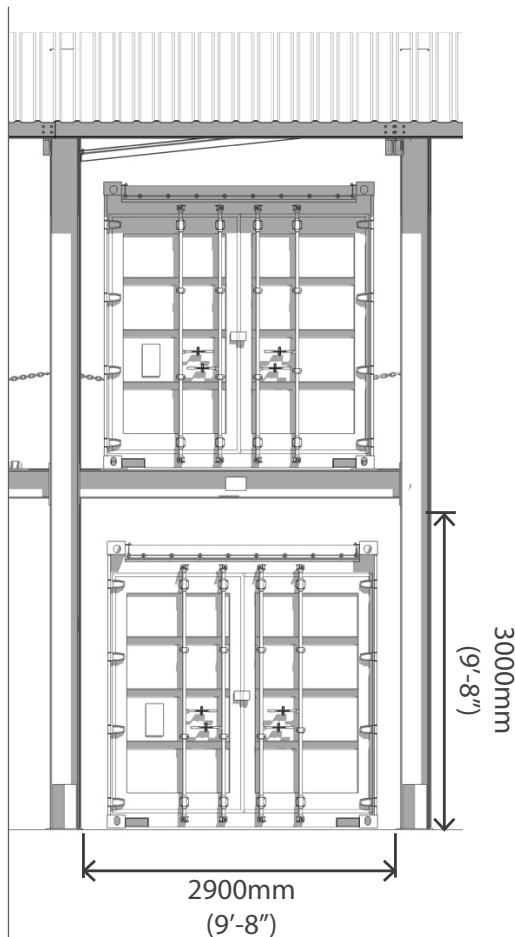
10FT BICON CONTAINER



BICONS rest on each level of storage on **custom steel lugs** which engage by design with the container's four corner castings. This provides **horizontal stability** to every BICON in storage, improving **safety** through design in case of rack impacts, and facilitating mobile rack applications



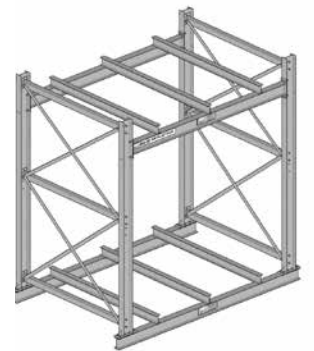
Top View



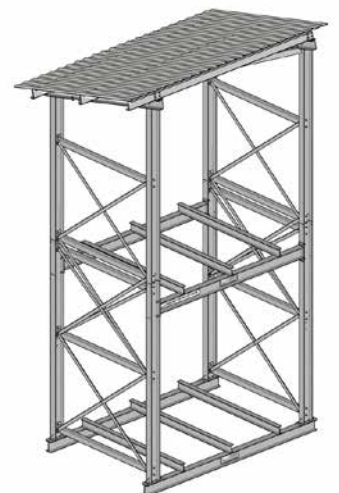
BAN-AIR MILITARY CARGO RACK is compatible with 463L ('ALOC') and ISU90 containers.

Optional Universal Base universal base for existing yards, including possible

STANDARD BAY



⊕ ADD ROOF



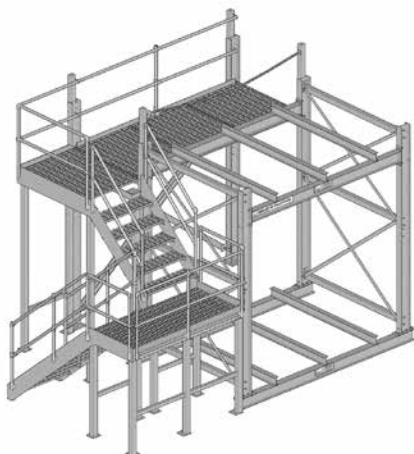
TECHNICAL



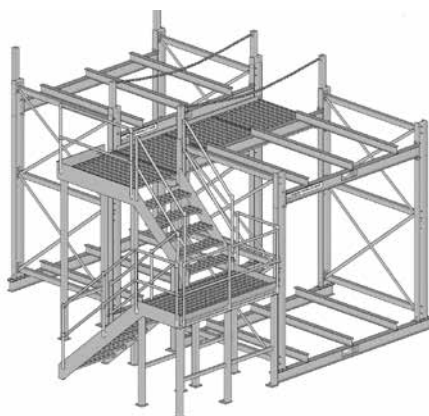
purpose designed for the strategic & efficient storage of large cargo specifically engineered to store both to store both

use allows for installation on
ability of asphalt or even crush stone (subject to engineering requirements)

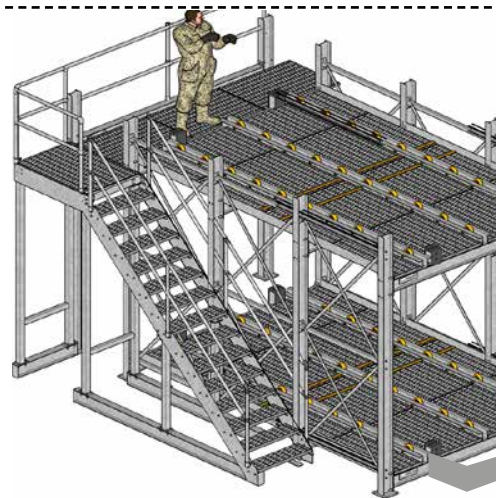
INSPECTION WALKWAY



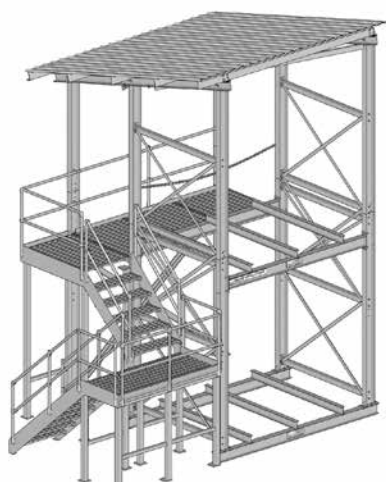
DOUBLE AISLE



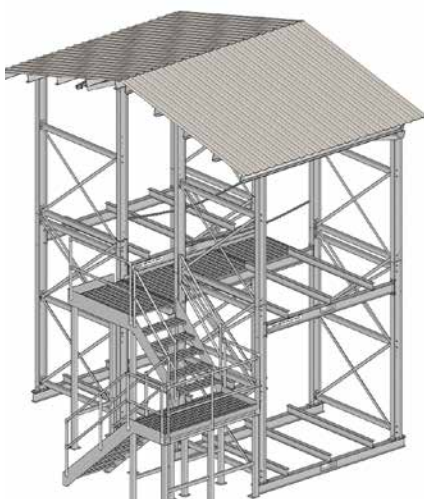
PUSH BACK OPTION



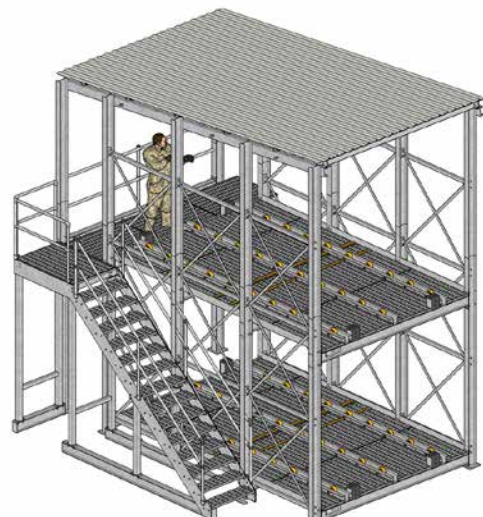
⊕ ADD ROOF



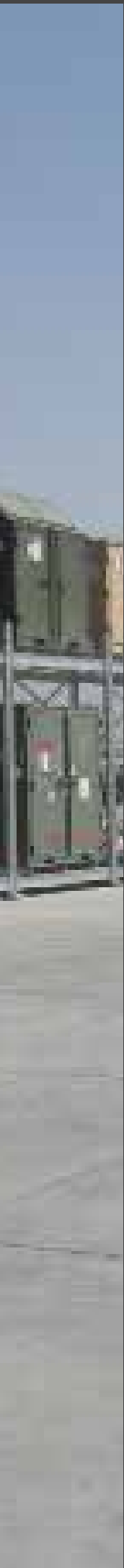
⊕ ADD ROOF



⊕ ADD ROOF







OFFICIAL US
GOVERNMENT
DISTRIBUTORS
FOR



BAN-AIR.COM