

Deployable Storage

Force-Multiplier for Military Logistics

SHARKCAGE is a deployable storage system that enable seamless transition between storage, transport and operation.

SHARKCAGE®
by Spacesaver®





DEPLOYABLE STORAGE





SHARKCAGE®

by Spacesaver®





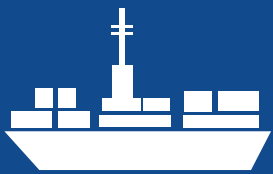
Installation Storage

Save warehouse space
Increase accountability
Reduce pilferage



Staging

Drastically reduce load time
Limited dunnage and less mistakes
Container planning made simple



Transport

Reduce containers by 30-50%
Material security and protection
Rapid platform transition



Operations

Increased readiness
Easy equipment access
97% First-Time Pull Rate



Redeployment

Intermodal flexibility
Rapid customs inspection
Efficient consolidation



Reset

Expedited reorganization
Faster container turn-in
Accountability for sensitive items



80%

Load time reduction

With minimal need for dunnage, the time required to stage and load is significantly reduced. The same is true of the container planning headache. This leads to faster and more predictable vessel turnaround time.

Up to 75%, depending on current load configuration and requirements.



50%

Typical footprint reduction



97%

Inventory accuracy

Increase inventory accuracy to ensure you find what you need, when you need it. First-time pull rate increased from 70% to an astonishing 97% for prepositioning project.

Stackable fully loaded



Slingloadable



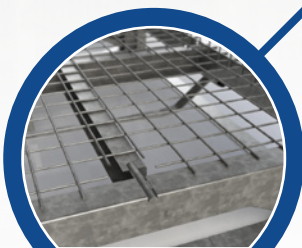
Easy assembly



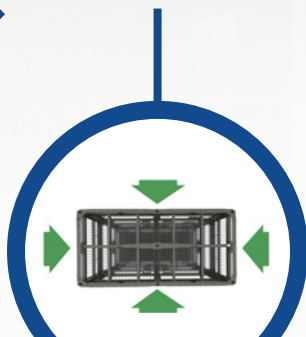
Adjustable shelvs



Lockable compartments



Internal and external tie downs



4-way forkliftable




Flatpackable



Vibration dampening

PATENT PENDING



Our products are strong, durable and flexible to serve the missions of today and tomorrow.

Technology

Over 40 years of focusing on a small niche has made us leaders and innovators in mobile storage systems. We are constantly improving our products, based on both customer feedback and the new technology available to us.

We have worked closely with the steel producer SSAB out of Sweden to find the optimal steel for mobile storage devices. SSAB has a long tradition of steel innovation from working with Volvo on the creation of structures that can absorb energy in a collision.

When creating a cage that works well for mobile operations, the ability to absorb shock is key to preventing damage to both the contents and the cage. At the same time, it is important to keep weight to a minimum. Focus should be on the strength-to-weight ratio, with the aim of making it as high as possible.

There are mainly four ways of increasing the ratio:

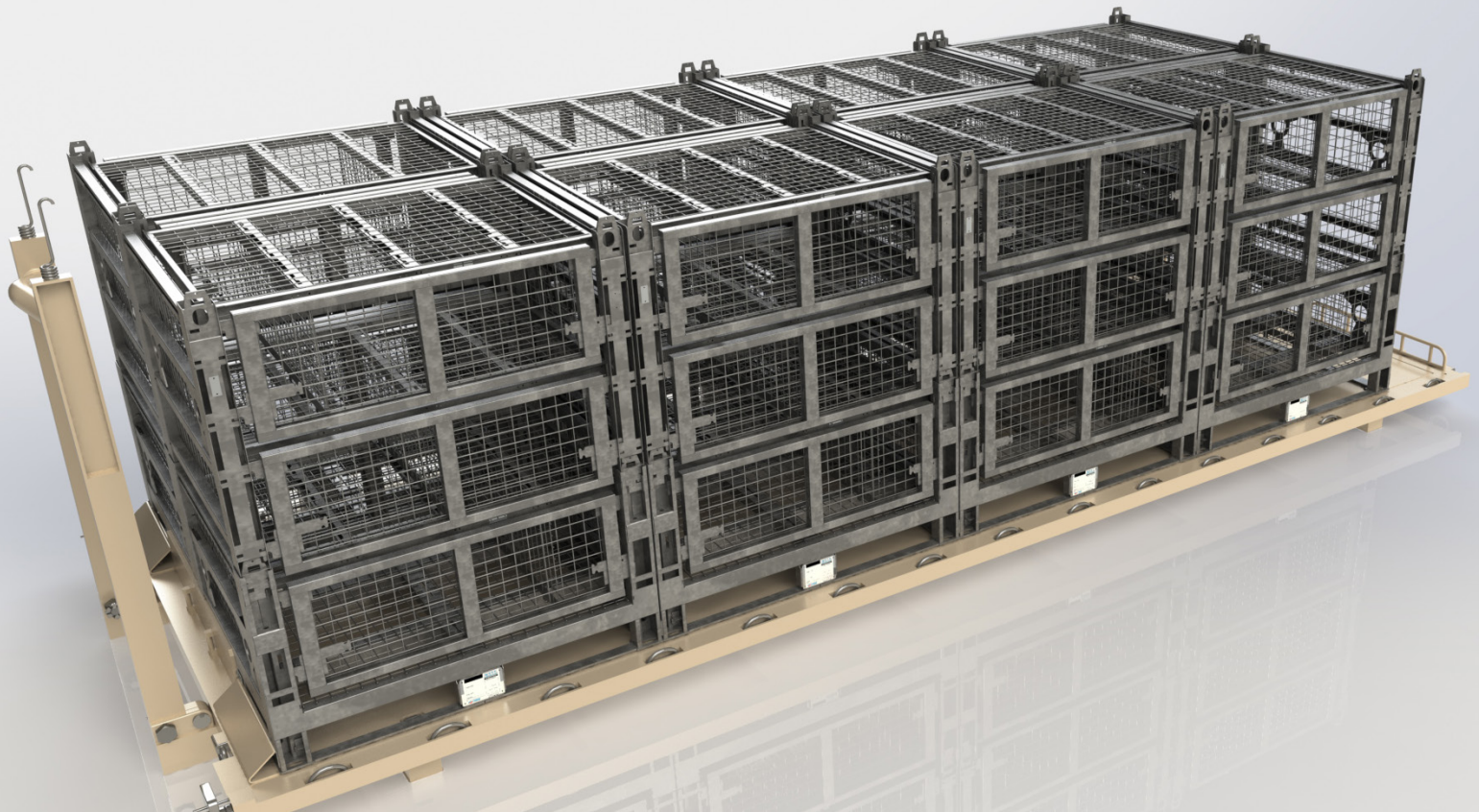
1. Use more sophisticated materials
2. Distribute strength evenly
3. Use the strength of one part in multiple directions
4. Add flexibility and dampening

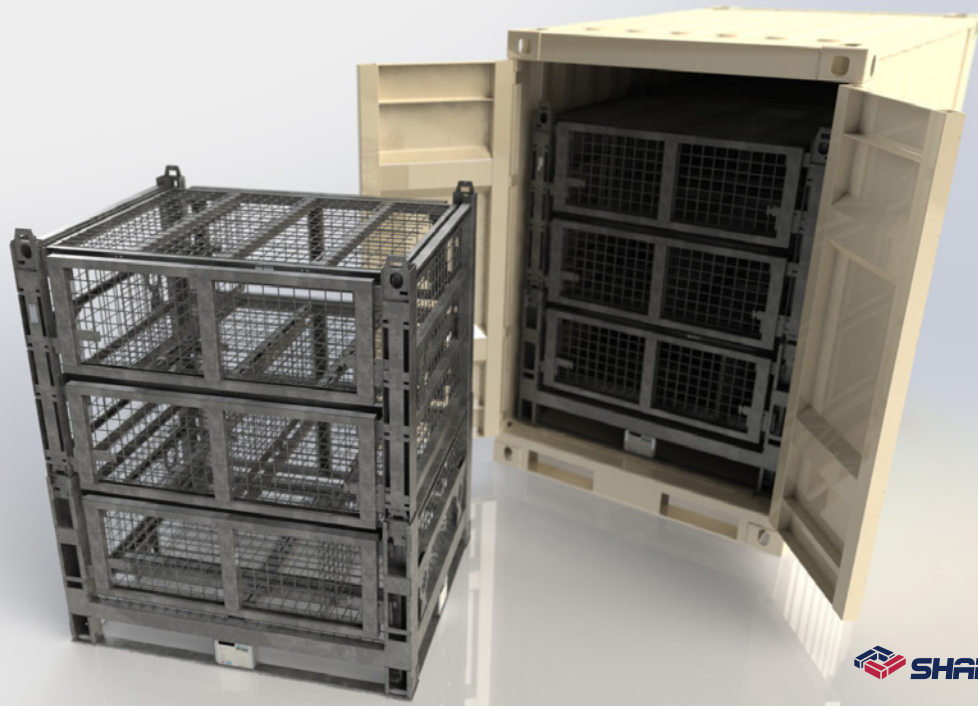
We tackle all four of these in the following ways: ultra-high-strength steel, sophisticated FEM analysis, vibration absorbing bends and, most importantly, real life testing.

Several of our cages are approved for ammunition transport at Defense Ammunition Center (TP-94-01), to ensure the quality of our products.



SHARKCAGE SMALL FOR QUADCON





SHARKCAGE
by Spacesaver

QUADCON

2 ea maximize a QUADCON container

463L AIR

4 ea maximize Air Pallet footprint

20 FT

FIT 8 ea in standard 20 ft container and CROP/PLS

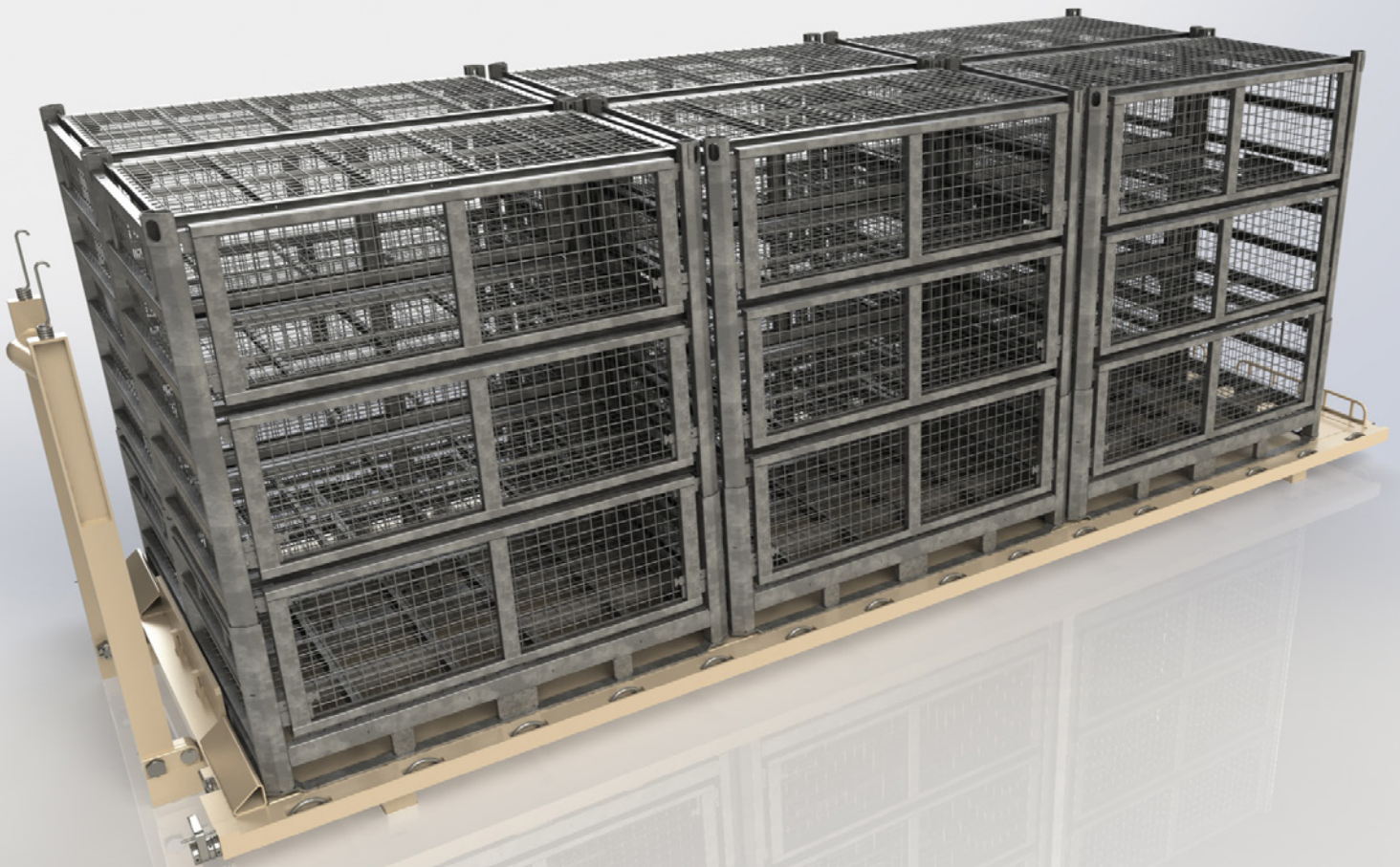


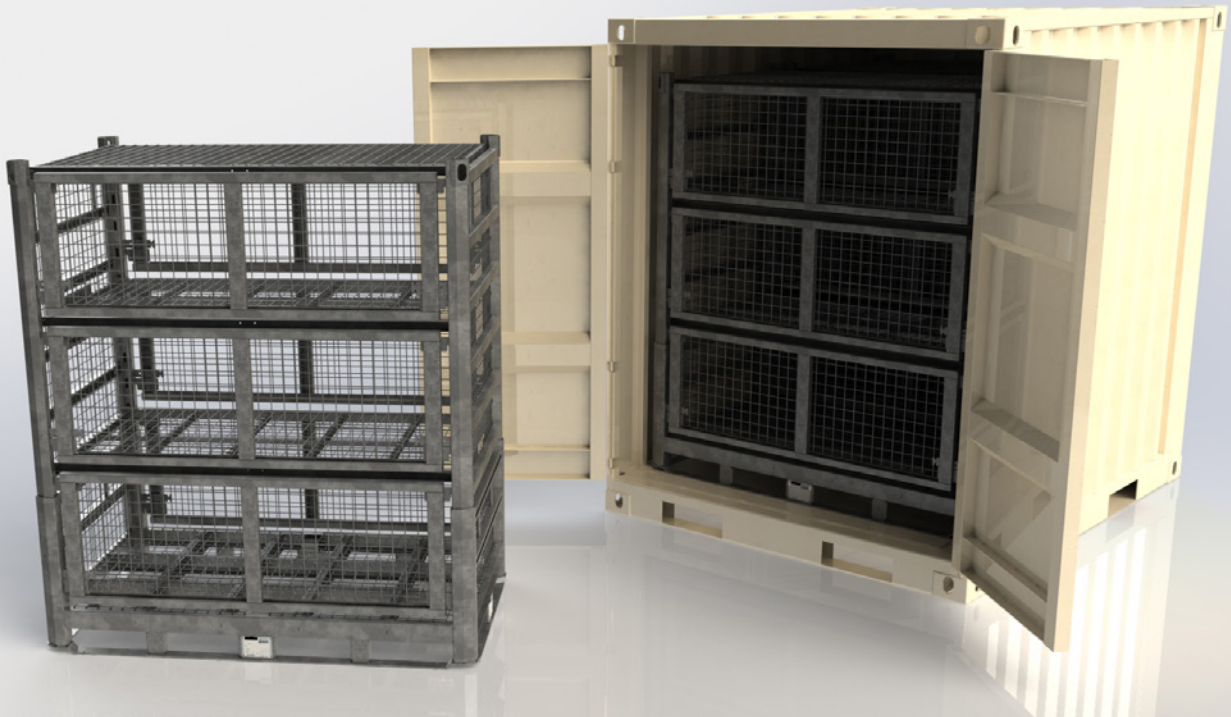
Partno.	SCGSS
Size (LxWxH) [in]	52x42x63
Tare weight	591 lbs
Capacity (total)	5,000 lbs
Material	Extra High Strength Steel
Finish	Hot-dipp galvanized, anti sparking and non corrosive
Stackability (Stationary/Mobile)	3 cages/2 cages
Sling loadable	Yes
Forkliftable	4-ways
Shelves and compartments	3
Ammunition certified by DAC	Yes





SHARKCAGE MEDIUM FOR TRICON





TRICON

Fit 2 ea maximize TRICON footprint

20FT

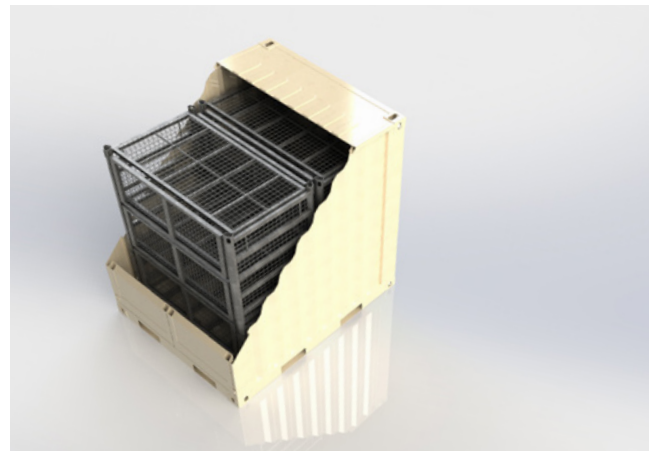
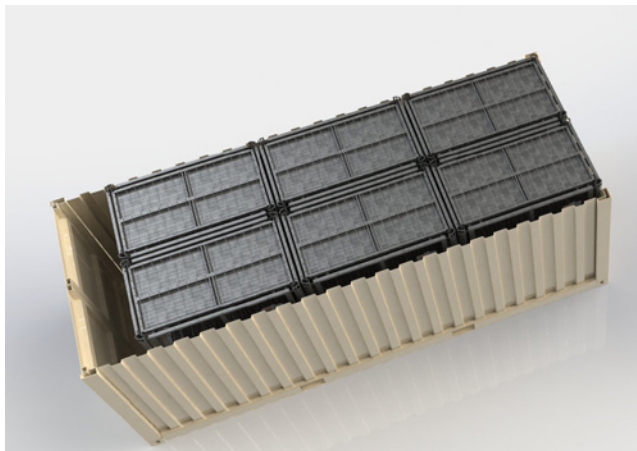
Fit 6 ea in standard 20 ft container and CROP/PLS

463L AIR

2 ea fit Air Pallet



Partno.	SCGSMD
Size (LxWxH) [in]	70x41x78
Tare weight	639 lbs
Capacity (total)	5,000 lbs
Material	Extra High Strength Steel
Finish	Hot-dipp galvanized, anti sparking and non corrosive
Stackability (Stationary & Mobile)	2 cages
Sling-loadable	Yes
Forkliftable	4-ways
Shelves and compartments	3 + 3
Ammunition certified by DAC	Yes





SHARKCAGE LARGE FOR 10 & 20 FT





20 FT

5 ea maximize standard 20 ft container or CROP/PLS

AIR

Available in Air version that maximize 463L pallet

AMMO

Certified for ammunition transport by DAC



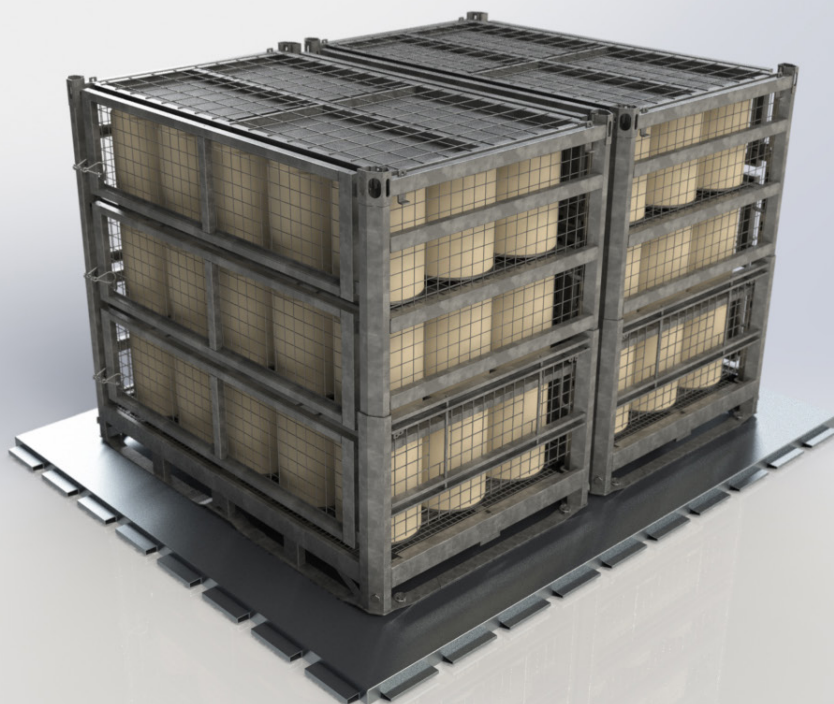
Partno.	SCGSLD
Size (LxWxH) [in]	89x46x87
Tare weight	882 lbs
Capacity (total)	5,000 lbs
Material	Extra High Strength Steel
Finish	Hot-dipp galvanized, anti sparking and non corrosive
Stackability (Stationary & Mobile)	2 cages
Sling-loadable	Yes
Forkliftable	4-ways
Shelves and compartments	4 + 4
Ammunition certified by DAC	Yes





SHARKCAGE HAZMAT





CLASS III P

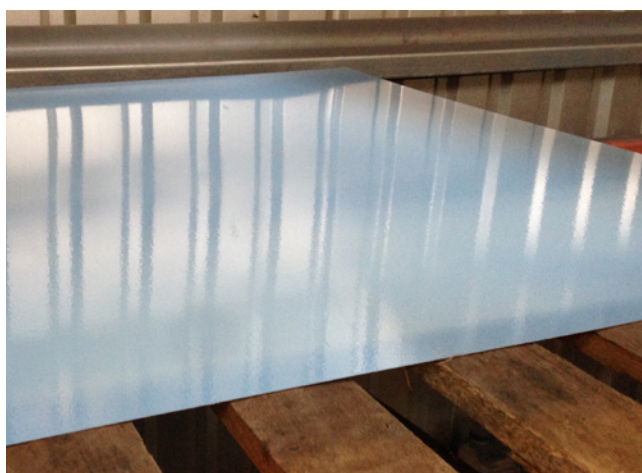
Complies with storage regulations by collecting spills from each shelf level

FOOTPRINT

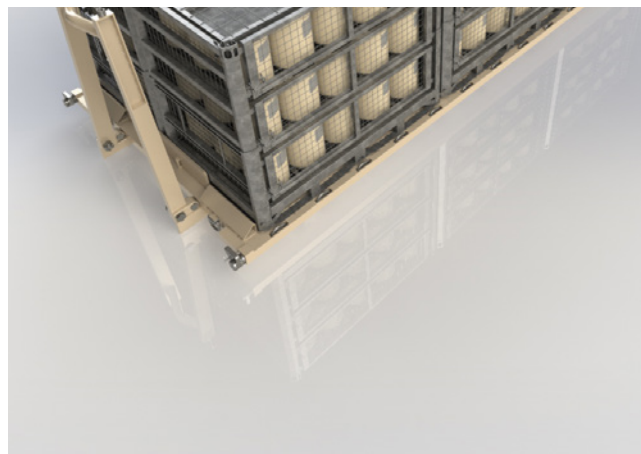
36 ea standard issue 5 gallon cans fit in each cage

ACID

Special coating to accomodate battery storage



Partno.	SCGH
Size (LxWxH) [in]	70x44x60
Tare weight	600 lbs
Capacity (total)	4,400 lbs
Material	Galvanized High Strength Steel and stainless steel
Stackability (Stationary/Mobile)	3 cages/2 cages
Sling-loadable	Yes
Forkliftable	4-ways
Reservoir size	18 gallon
Capacity of 5 gallon cans	36 cans in each cage





SHARKCAGE DEPLOYMENT LOCKER





CUSTOM

Several custom configurations available. Add wheels, fastening, drawers and more

ACCESS

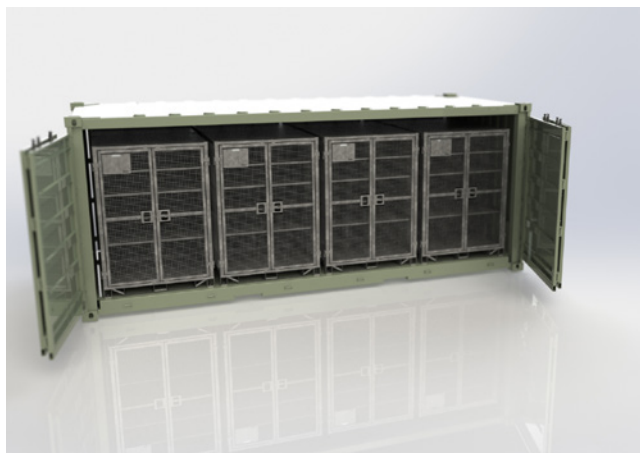
Access all cages when used in a sideopening 20 ft container

LIGHT

Reconfigure shelf heights without tools. Fits standard shipping containers.

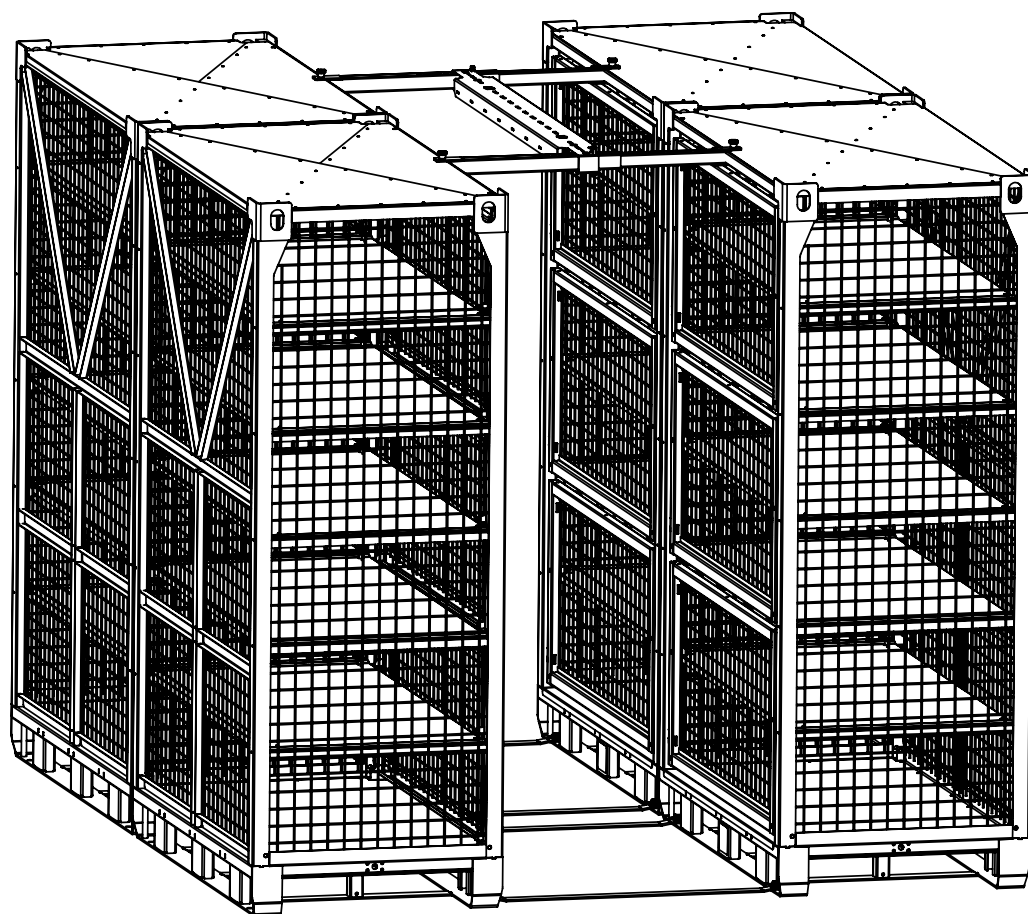


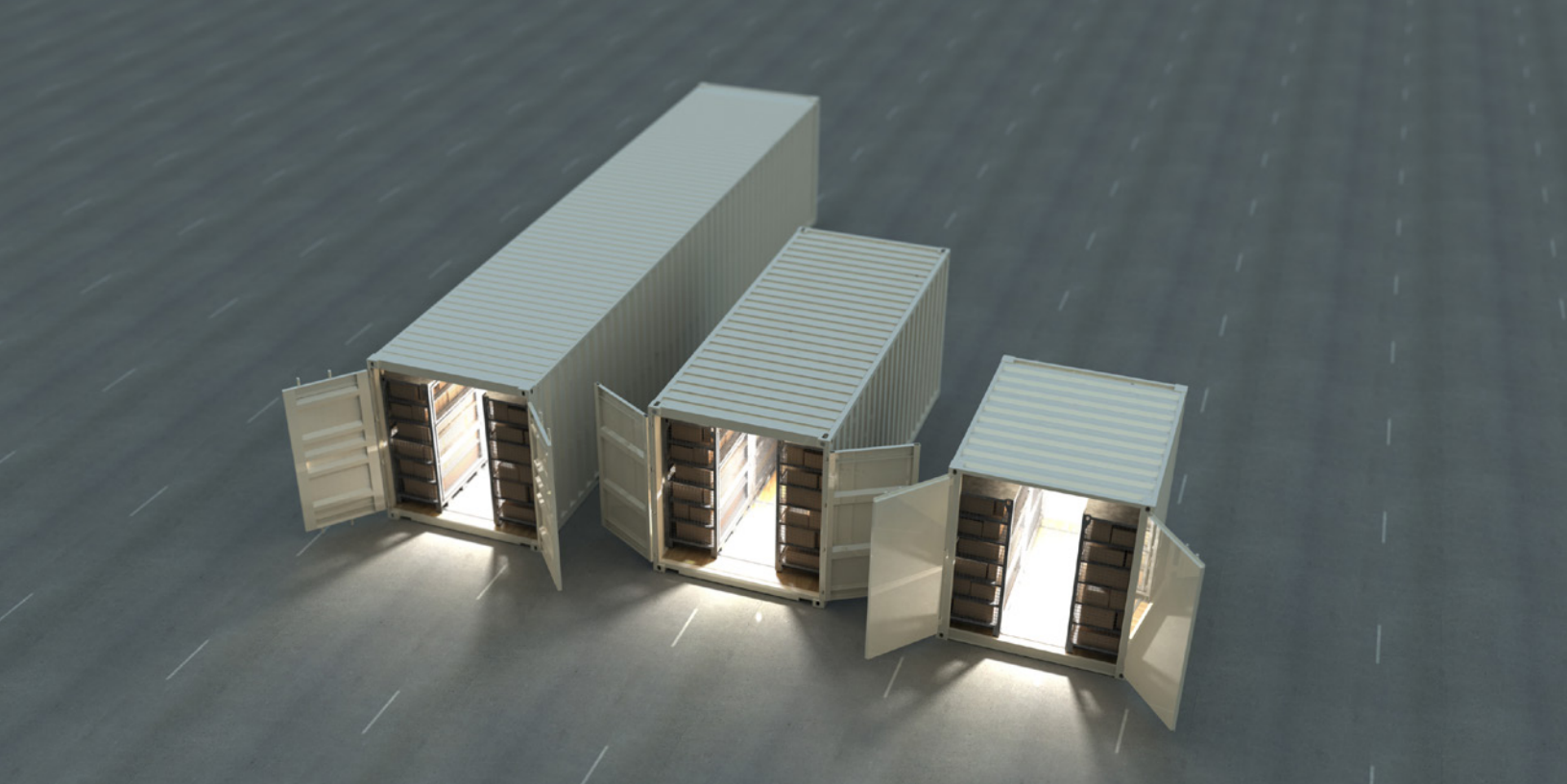
Partno.	SCGDL
Size (LxWxH) [in]	53x43x73
Tare weight	463 lbs
Capacity (total)	5,000 lbs
Material	Extra High Strength Steel
Finish	Hot-dipp galvanized, anti sparking and non corrosive
Stackability (Stationary & Mobile)	2 cages
Sling-loadable	Yes
Forkliftable	4-ways
Shelves	4 + 4
Collapsible	No





SHARKCAGE CONTAINER WAREHOUSE II KIT





ACCESS

Access content without emptying container

LIGHT

Advanced LED included in the kit

ADAPT

Fits standard 10', 20' and 40' shipping containers without modification



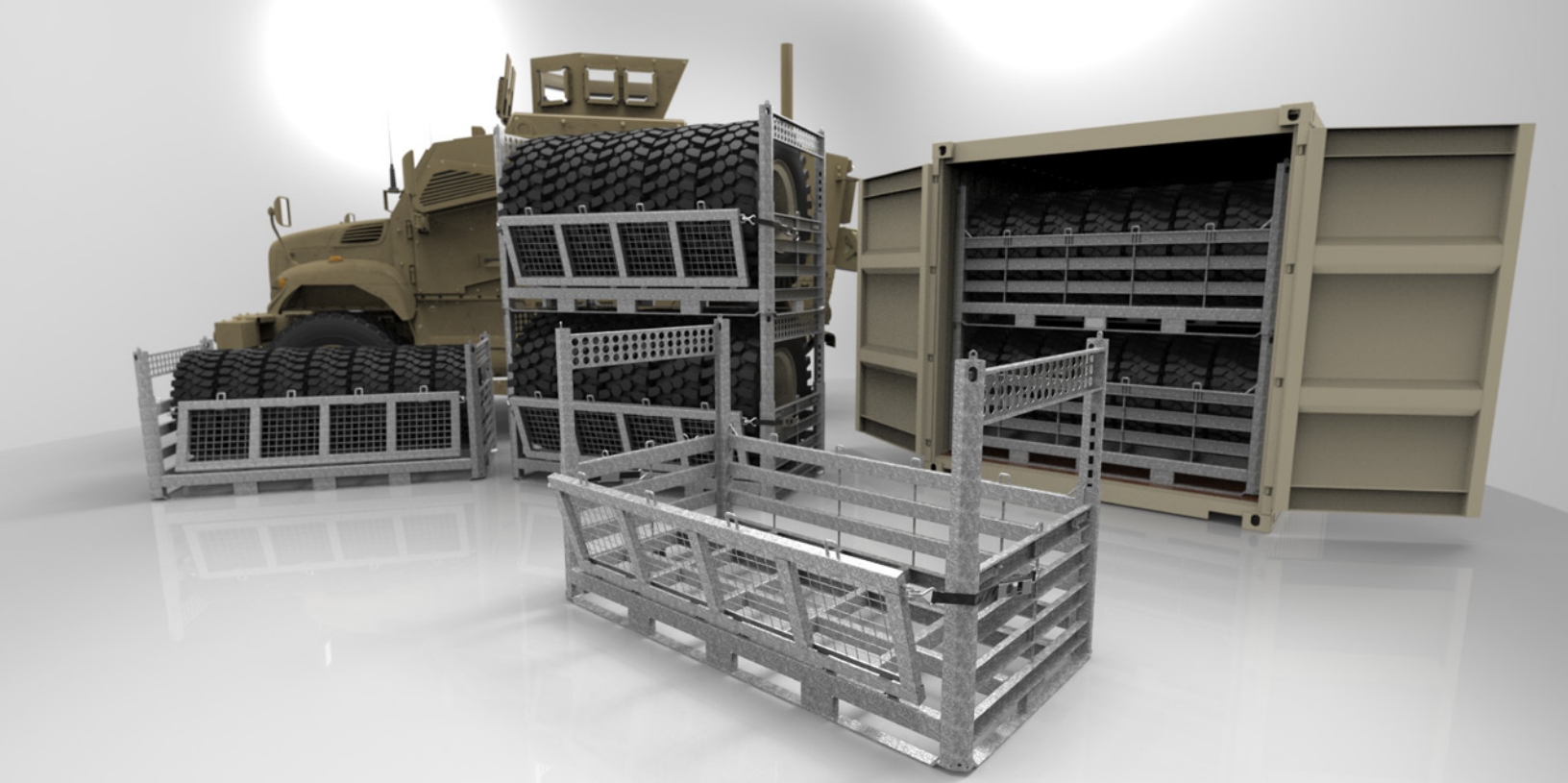
Partno.	SCGWC2K
Size (LxWxH) [in]	55x30x83
Tare weight	507 lbs each cage
Capacity (total)	5,000 lbs each cage
Material	Extra High Strength Steel
Finish	Hot-dipp galvanized, anti sparking and non corrosive
Stackability (Stationary & Mobile)	1 cage
Sling-loadable	Yes
Forkliftable	4-ways
Shelves and compartments	6 ea / 3 ea
QTY to outfit 20' container	8 ea cages, 2 ea kits





SHARKCAGE WHEEL RACK





ACCESS

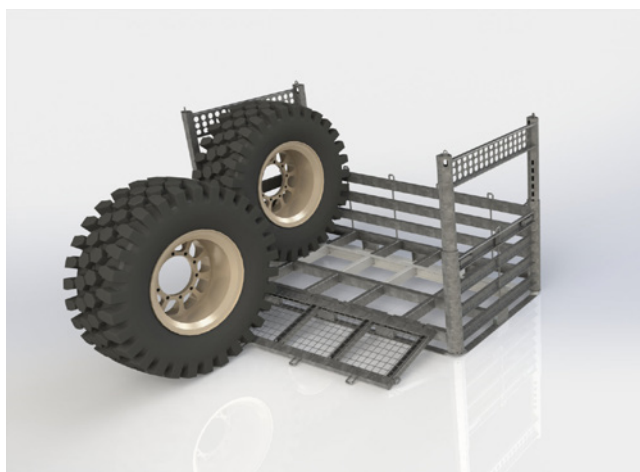
Access content even while on the vessel.

MOVE

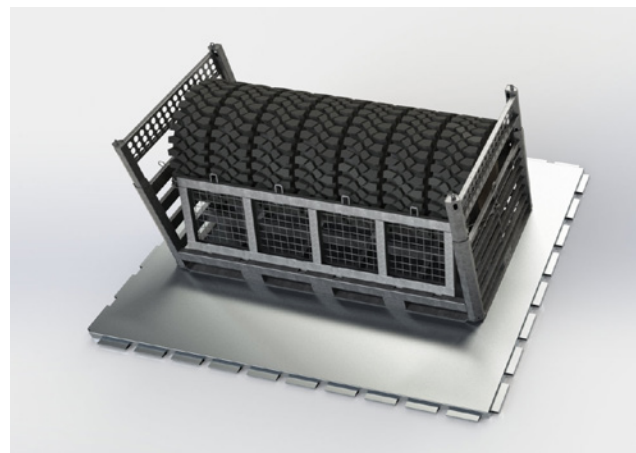
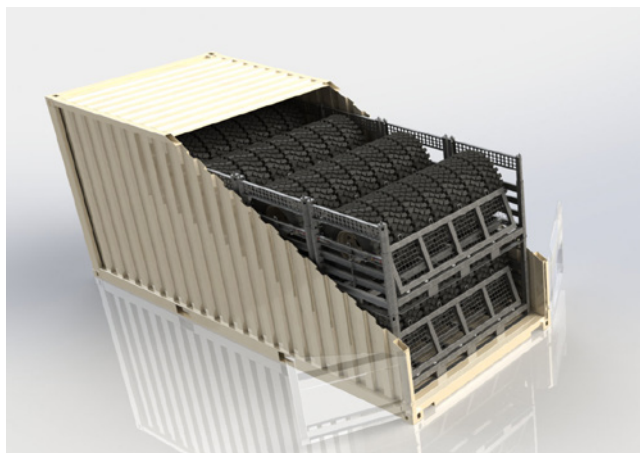
Pack and store in a warehouse. Load into container with forklift.

FLEXIBLE

Reconfigure shelf heights without tools. Fits standard shipping containers.



Partno.	SCGWR
Size (LxWxH) [in]	89x45x60
Tare weight	461 lbs
Capacity (total)	4,000 lbs
Material	Extra High Strength Steel
Finish	Hot-dipp galvanized, anti sparking and non corrosive
Stackability (Stationary/Mobile)	3 cages/2 cages
Sling-loadable	Yes
Forkliftable	4-ways
Shelves and compartments	4 + 4
Lockable	Yes





SHARKCAGE WHEEL RACK HEAVY DUTY





ACCESS

Access content even while on the vessel.

MOVE

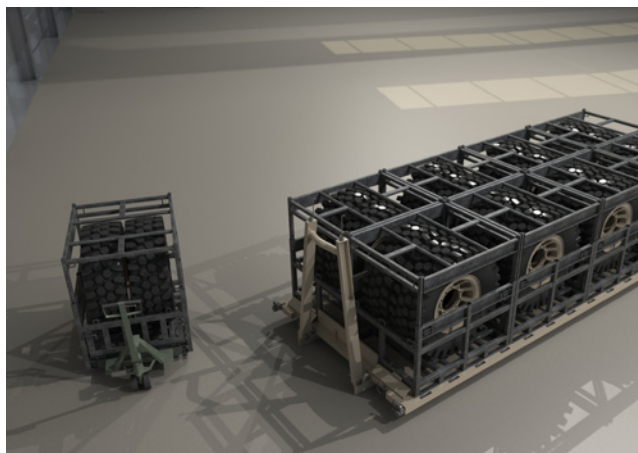
Pack and store in a warehouse. Load into container with forklift.

FLEXIBLE

Reconfigure shelf heights without tools. Fits standard shipping containers.



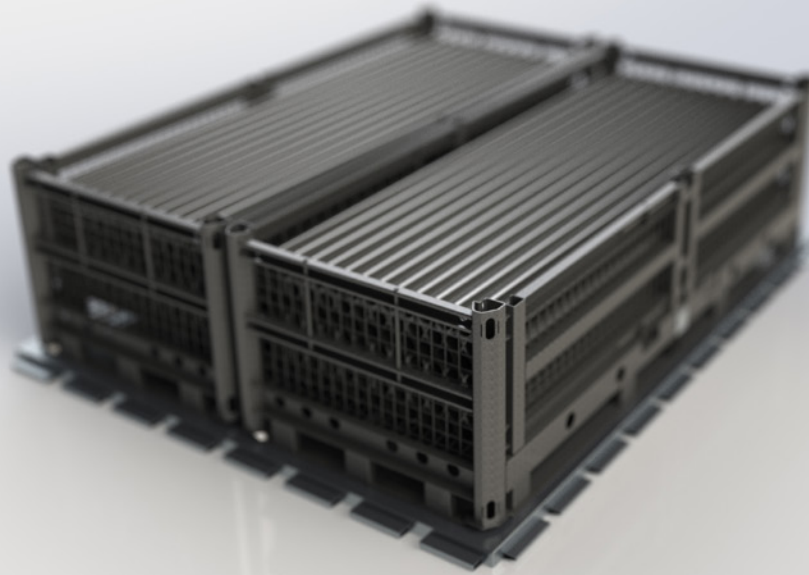
Partno.	SCGWRHD
Size (LxWxH) [in]	44x55x67
Tare weight	399 lbs
Capacity (total)	5,000 lbs
Material	Extra High Strength Steel
Finish	Hot-dipp galvanized, anti sparking and non corrosive
Stackability (Stationary/Mobile)	3 cages/2 cages
Sling-loadable	Yes
Forkliftable	4-ways
Shelves and compartments	4 + 4
Lockable	Yes





SHARKCAGE TACTICAL BASKET





STRONG

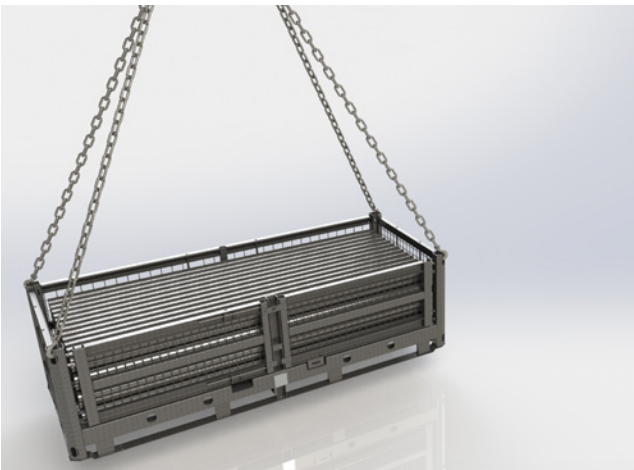
The SharkCage Tactical Basket is strong enough to hold 7000 lbs

STACK

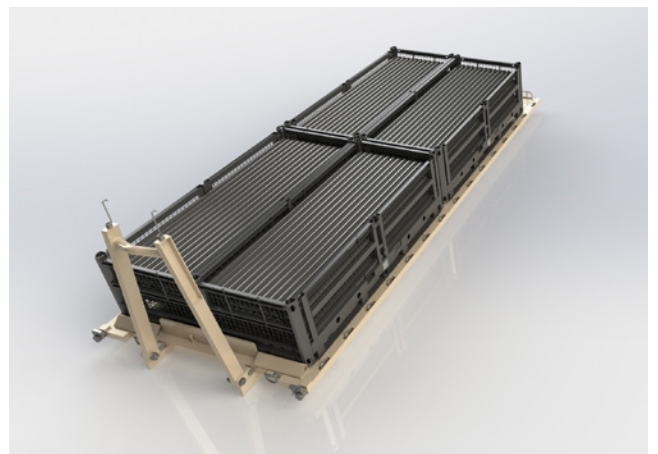
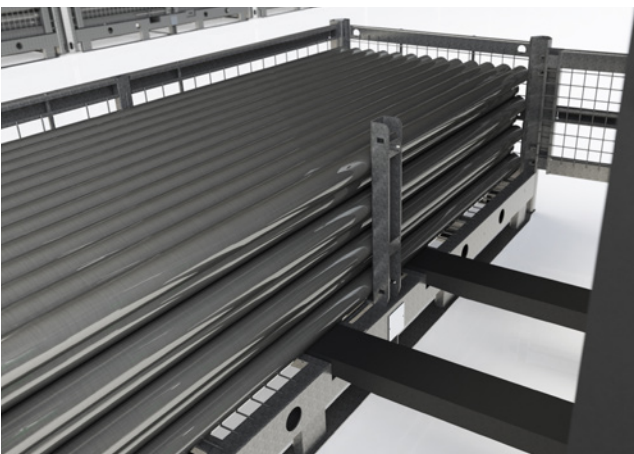
Stack up to 7 ea Tactical Baskets high.

463L

Two fit on a 463L Pallet.



Partno.	SCGTB
Size (LxWxH) [in]	104x43x31
Tare weight	728 lbs
Capacity (total)	7,000 lbs
Stackability (Stationary/Mobile)	5 cages/2 cages





Spacesaver Corporation
1450 Janesville Avenue
Fort Atkinson, WI 53538-2798
1-800-492-3434
www.spacesaver.com

Spacesaver Corporation is a division of KI.

KI is a registered trademark of Krueger International, Inc.

Spacesaver is a registered trademark of Spacesaver Corporation.

© 2016 KI and Spacesaver Corporation. All Rights Reserved. Litho in USA. SSC/DEL Sharkcage_0416_Broch_MIL



KI
1330 Bellevue Street
P.O. Box 8100
Green Bay, WI 54302-8100
1-800-424-2432
www.ki.com