

modular Casework



Finishing Specification Guide

Companion to Hamilton Sorter's Online Specifying System





Project Guide for Finishes & Hardware



You reach for the suture kit and there it is, where it always is. Your modular **Caseworks** trauma room has a custom-designed place for everything and everything is in its place. For over 40 years, Hamilton Sorter has designed and built specific solutions for our clients.

Hamilton Sorter's project managers partnered with your architect to fashion a precise, efficient modular **Caseworks** system mailroom. There is not an inch of wasted space. The lifetime guarantee is reassuring, but what happens when your company expands? modular **Caseworks** cabinets are created with individual pieces that look built-in, but may be reconfigured and expanded over the years to accommodate your company's growth.

You can picture the perfect art room – beautiful floor-to-ceiling cherry-colored cabinets of flat skinny drawers overflowing with paper; gigantic sinks and abundant work surfaces; windowed shelves of brushes, glue and paint. Even on a school budget, this image does not have to be a dream. Much of modular **Caseworks**' finishing is still done by hand so it looks like custom millwork. However, Hamilton Sorter also employs full use of the latest in German automation for specifying and cutting our top quality material, making the price of the cabinets very attractive.

TABLE OF CONTENTS

Introduction	3
Step 1 Choose the Body	4
Step 2 Special Options for Laminate	5
Step 3 Door & Drawer Fronts for Laminate	7
Step 4 Hardware for Laminate	9
Step 5 Color for Laminate	12
Step 2 Special Options for Steel	13
Step 3 Door & Drawer Fronts for Steel	14
Step 4 Hardware for Steel	17
Step 5 Color for Steel	18
Step 6 Worksurface	19

STEP 3
Choose the drawer and
door fronts

STEP 5
Choose the color

STEP 1
Choose the body
which includes the back,
side, bottom and top (the
work surface will be
added later)

STEP 4
Choose the hardware
which includes drawer
slides, pulls, hinges
and locks

STEP 2
Choose special options
(unique selections for kick
plate and angled top available
on some cabinets)

STEP 6
Choose the work surface



Cabinet shown features oiled cherry thermofoil Pavillon drawer and door fronts and textured crescent handles.



You have consulted closely with your designer to configure the ideal work environment. Or perhaps you presented your Hamilton Sorter Project Manager with a number of needs and challenges for your space and he has returned with a floor plan. Now comes the fun part!

Hamilton Sorter's modular **Caseworks** offers a vast array of options in finishes and top quality component hardware. This handbook, along with Hamilton Sorter's proprietary interactive specifying system at www.hamiltonsorter.com, will guide you through the specifying process.

All the information you need to choose the right fit is here at your fingertips.

APPROPRIATE APPLICATIONS FOR CABINET FINISH

	Breakroom Dry	Breakroom Wet	Copy Center	Laboratory	Mail Center	Nurses Station	Pharmacy	Procedure/ Exam Room Dry	Procedure/ Exam Room Wet	Reception Station	Workroom
LAMINATE WITH LAMINATE KICK PLATE	●		●		●	●	●	●		●	●
LAMINATE WITH STEEL KICK PLATE	●	●	●	●	●	●	●	●	●	●	●
POWDER COATED STEEL	●	●	●	●	●	●	●	●	●	●	●
STAINLESS STEEL	●	●		●			●	●	●		

Step 1: Choose the Cabinet Body



laminate

- 2 mm Impact resistant PVC edge banding stands up to wear and tear
- Precision pin and cam construction makes replacing parts easy
- All sides of every board are sealed with edge banding before assembly
- Adjustable hanging rails are included for all wall cabinets
- Easy access from inside the cabinet allows base and storage cabinets to be leveled independently
- Locking shelf clip holds the adjustable shelves in place

Proceed to Laminate tab for Step 2



powder coated steel

- Spot and wire welded mean less racking and 500 lbs per linear foot load bearing
- Weld is stronger than mechanical fastening and contains spills
- Stainless steel drawers mean longer life and easy cleaning
- Cabinet backs are easily removed from the inside
- Chemical resistant 4mil powder coat is double the thickness of most furniture grade powder coating
- modular **Caseworks** powder coat stands up to harsh cleaning chemicals
- Exceeds all Scientific Equipment Furniture Association (SEFA) 8 Performance Standards

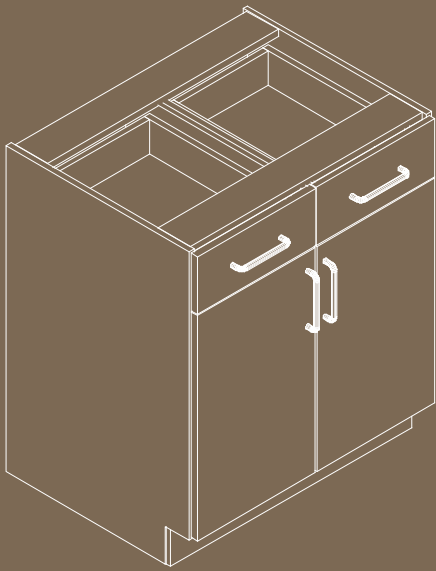
Proceed to Steel tab for Step 2



stainless steel

- Superior corrosion resistance
- Perfect for medical environment's scrub downs and bleach washings
- Steel doors are fire retardant
- Exceeds all Scientific Equipment Furniture Association (SEFA) 8 Performance Standards
- Spot and wire welded mean less racking and 500 lbs per linear foot load bearing
- Welding is stronger than mechanical fastening and contains spills
- Stainless steel drawers mean longer life and easy cleaning
- Cabinet backs are easily removed from the inside

Proceed to Steel tab for Step 2



STATE OF THE ART HOLZMA, WEEKE AND IMA EQUIPMENT

HANDCRAFTED VENEER FINISHES, SOLID SURFACING, PAINTED REVEALS

PRECISE COMPUTER DESIGN

+

FINE MILLWORK LOOK



Step 2: Select Special Options **kick plate**

modular**Caseworks** offers a unique selection of kick plate finishes. The leveling alignment adjustment system is easily accessible from inside the cabinet and allows base and storage cabinets to be leveled independently.



Laminate

- All sides are sealed to reduce wicking and capillary action
- Kick plate matches color of cabinet



Powder Coated Steel

- 18 gauge steel
- Non-permeable so no chance of capillary action
- Excellent in high moisture areas
- Black powder coated standard (other colors available upon request)
- Cleansed with standard cleaning solution



Stainless Steel

- 18 gauge steel
- Non-permeable so no chance of capillary action
- Superior corrosion resistance in high moisture areas
- Superior resistance against harsh chemicals
- Best choice for sterile environments, easily cleaned

A tall, light-colored modular cabinet with an angled top and six doors. The cabinet is divided into two rows of three doors each. Each door has a vertical handle and a small circular lock. The top of the cabinet is angled downwards. The cabinet is shown in a 3D rendering against a plain white background.

Step 2: Select Special Options

cabinet top

In addition to a standard flat top, modular **Caseworks** also offers an angled top for wall and storage cabinets. The angled surface of wall and tall cabinets stays clean and is ideal for medical applications.

Step 3: Select Your Door and Drawer Fronts

1

Laminate

- Wide selection of laminate colors
- 2 mm impact resistant PVC edge banding resists wear and tear
- Inside door finish matches exterior's
- Many handle options



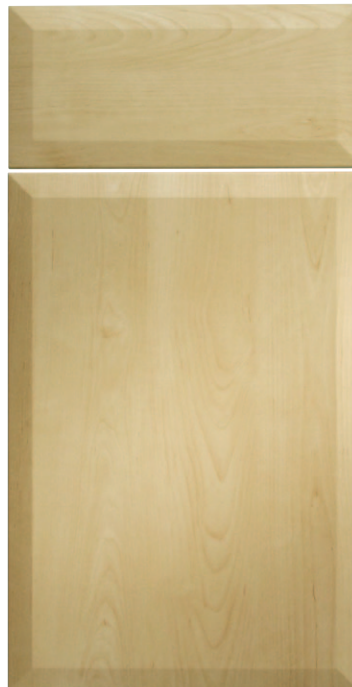
2

Thermo Foil

- Seamless finish is easy to clean
- 3 design profiles (others available upon request)
- Wide variety of standard colors (custom colors available upon request)
- Many handle options



Harper
shown in Woodlawn Cherry



Celadon
shown in Kensington Maple



Pavillon
shown in Slate Gray



Thermo Foil with Glass

- Glass and acrylic available in clear or frosted (custom fronts available upon request)
- Wide variety of colors (others available upon request)
- Many handle options



3

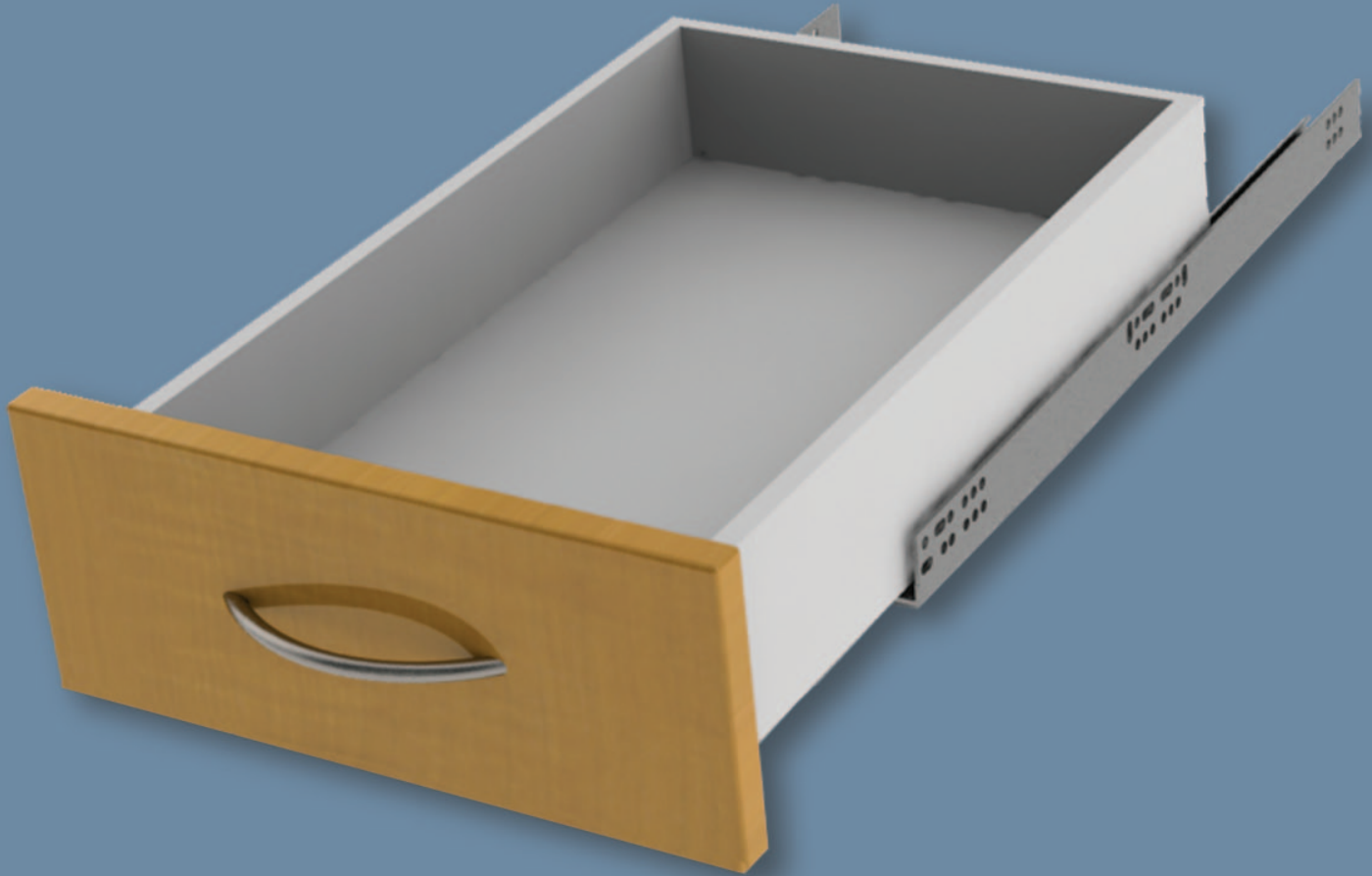
Aluminum with Glass

- Glass and acrylic available in clear or frosted (custom fronts available upon request)
- Aluminum frame provides strength and a hi-tech look
- Many handle options



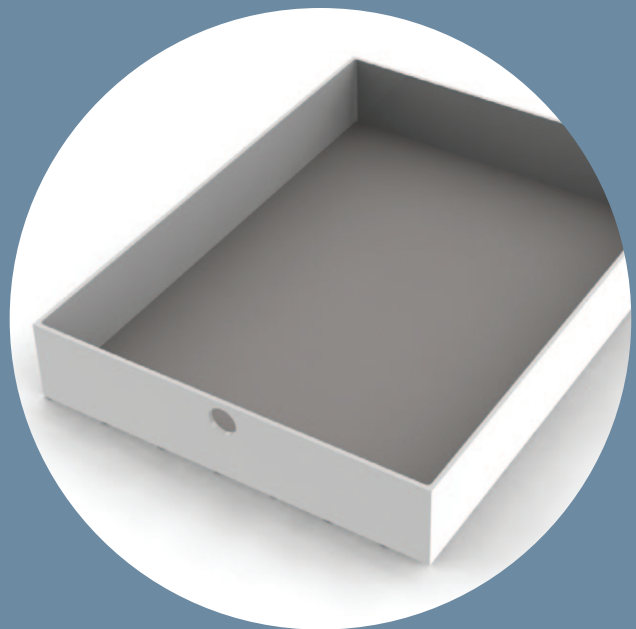
Every modular Caseworks Laminate Drawer

- Is sealed in a continuous white vinyl wrap construction that is easy to clean
- Offers generous 21" deep drawers for more storage space
- Features full extension slides which provide complete accessibility
- Presents many handle options



Optional Drawer Insert

- One piece seamless
- Easy to clean and sterilize
- Designed to contain spilled fluids
- Improved infection control (also autoclavable)
- Available with dividers in custom configurations (call for more info)



Step 4: Select Your Hardware **drawer slide**



Side Mount Ball Bearing

- Ball bearing side mount slide features 100 lb load capacity
- Ball bearing slide action is smooth
- Full extension slides provide complete accessibility



Under Mount

- Durable advanced technology concealed under the drawer
- Full extension slides provide complete accessibility
- Slides are stable, self-cleaning and feature 100 lb load capacity
- Easy assembly for smooth, effortless drawer removal and cleaning



Under Mount with Soft Close

- Self and soft closing feature reduces noise levels
- Durable advanced technology concealed under the drawer
- Full extension slides provide complete accessibility
- Slides are stable, self-cleaning and feature 100 lb load capacity
- Easy assembly for smooth, effortless drawer removal and cleaning

Step 4: Select Your Hardware **handles**



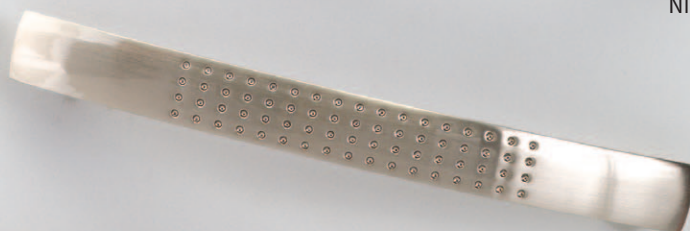
ELLIPTICAL



BLACK CRESCENT



NICKEL CRESCENT



TEXTURED CRESCENT



FLARED CRESCENT



RECESSED SILVER

Step 4: Select Your Hardware **locks and hinge choices**

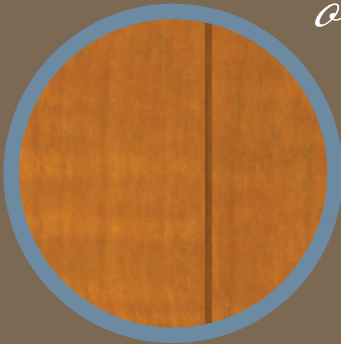


door lock, optional

- Removable lock plugs make it easy to change keys
- High quality for long life
- Black finish locks
- Brass keys

drawer lock, optional

- Removable lock plugs make it easy to change keys
- High quality for long life
- Black finish locks
- Brass keys

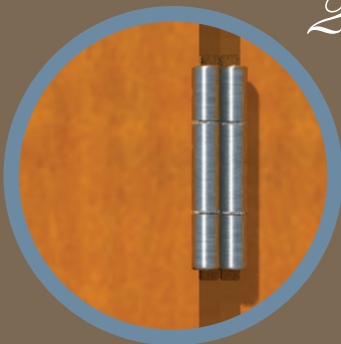


overlay 110 degree hinge

- Allows door to open 110 degrees
- Cleanest look, hinge is not visible when door is closed
- Special feature closes door tight
- 3 dimensions of adjustability for perfect fit
- Toolless hinge for easy door removal
- Meets ANSI/BHMA Grade 1 standards

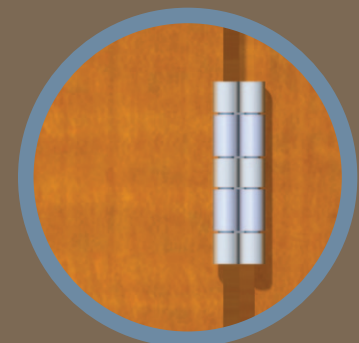
110 degree hinge soft close

- Same features as overlay
- And, self and soft closing feature reduces noise levels



270 degree hinge

- Allows door to open 270 degrees
- Special feature closes door tight
- 3 dimensions of adjustability for perfect fit
- Thin profile reduces visibility when door is shut
- Door easily removed with screw driver
- Meets ANSI/BHMA Grade 1 standards



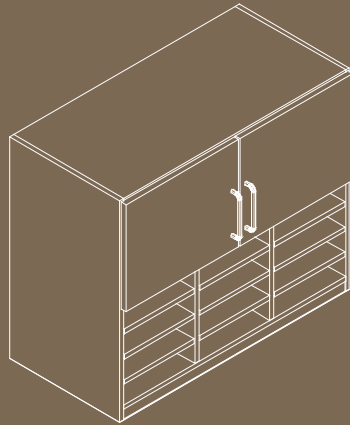
5 knuckle hinge

- Stainless steel
- Designed for the rigors of institutional applications
- Meets ANSI/BHMA Grade 1 standards

Step 5: Select Your Laminate Color

Hamilton Sorter offers a wide selection of laminate colors. For a complete listing, please visit www.hamiltonsorter.com.

Proceed to Worksurface tab.



TECH DEPARTMENT RELEASES PLANS TO SHOP FLOOR

DO NOT RECEIVE OR
FORWARD A BAD PART

MATERIAL HANDLERS SUPPLY RAW MATERIAL TO MACHINING DEPARTMENT

A TEAM OF SKILLED CNC MACHINE OPERATORS
CUT, EDGE & DRILL PARTS

EXPERT CRAFTSMEN ASSEMBLE CABINETS &
PERFORM SYSTEMATIC QUALITY CHECKS ON MOVING PARTS

SHIPPING SPECIALISTS METICULOUSLY BOX FURNISHINGS & HARDWARE

BUILT TO SPEC, QUALITY
FURNISHINGS FEATURING
A FINE ATTENTION TO DETAIL

STEEL





Step 2: Select Special Options **cabinet top**

In addition to a standard flat top, modular **Caseworks** also offers an angled top for wall and storage cabinets. The angled surface of wall and tall cabinets stays clean and is ideal for medical applications.

Step 3: Select Your Door and Drawer Fronts

1

Powder Coated Steel

- 18 gauge steel
- Excellent in high moisture areas
- Chemical resistant 4 mil powder coat is double the thickness of most furniture grade powder coating
- modular **Caseworks** powder coat stands up to harsh cleaning chemicals
- Cleansed with standard cleaning solution
- Exceeds all Scientific Equipment Furniture Association (SEFA) 8 Performance Standards
- Wide variety of colors (others available upon request)



2

Stainless Steel

- 18 gauge steel
- Superior corrosion resistance
- Perfect for medical environment's scrub downs and bleach washings
- Steel doors are fire retardant
- Cleansed with standard cleaning solution
- Exceeds all Scientific Equipment Furniture Association (SEFA) 8 Performance Standards



3

Laminate

- Wide selection of laminate colors
- 2 mm impact resistant PVC edge banding resists wear and tear
- Inside door finish matches exterior's
- Many handle options



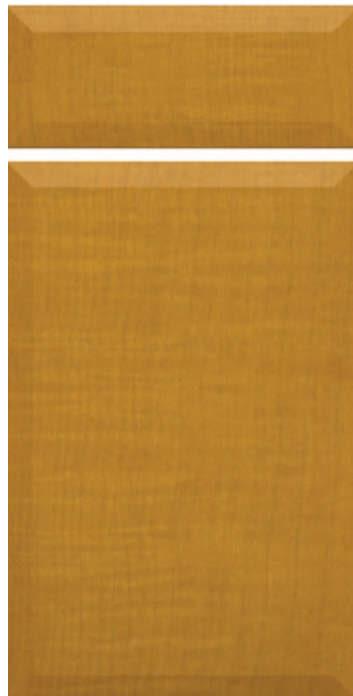
4

Thermo Foil

- Seamless finish is easy to clean
- 3 design profiles (others available upon request)
- Wide variety of standard colors (custom colors available upon request)
- Many handle options



Harper
shown in Dove Grey



Celadon
shown in Hampton Maple



Pavillon
shown in Oiled Cherry

Thermo Foil with Glass

- Glass and acrylic available in clear or frosted (custom fronts available upon request)
- Wide variety of colors (others available upon request)
- Many handle options



5

Aluminum with Glass

- Glass and acrylic available in clear or frosted (custom fronts available upon request)
- Aluminum frame provides strength and a hi-tech look
- Many handle options



Step 4: Select Your Hardware **locks and hinge choices**



door lock, optional

- Removable lock plugs make it easy to change keys
- High quality for long life
- Black finish locks
- Brass keys

drawer lock, optional

- Removable lock plugs make it easy to change keys
- High quality for long life
- Black finish locks
- Brass keys

5 knuckle hinge

- Stainless steel
- Designed for the rigors of institutional applications
- Meets ANSI/BHMA Grade 1 standards



Outside



Inside

Step 4: Your Hardware **drawer and slide**



Stainless Steel

- One piece stainless steel drawers mean longer life and easy cleaning
- Smooth side mount ball bearing slide allows easy removal of drawer body and creates 150 lb load capacity
- Full extension slides provide complete accessibility

Step 4: Select Your Hardware handles for laminate, thermo foil and aluminum fronts

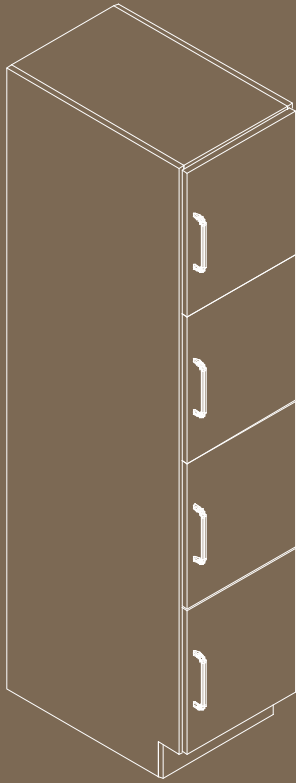
Stainless steel and power coated fronts fitted with loop handle



Step 5: Select Your Powder Coated or Stainless Steel Color

Hamilton Sorter offers a wide selection of steel colors. For a complete listing, please visit www.hamiltonsorter.com.

Proceed to Worksurface tab



PROBLEM

YARDS OF HELMETS, FACEMASKS, CHINSTRAPS, MOUTHPIECES, SHOULDER PADS, FOOTBALLS, GAME PLANS & TEAM RECORDS

WORK SURFACE NEEDED TO ASSEMBLE HELMETS

ALSO NEED CONFERENCE TABLE TO DEVISE STRATEGY & DESKS

30' X 40' SPACE AT OKLAHOMA STATE UNIVERSITY'S BOONE PICKENS FOOTBALL STADIUM

SOLUTION

CUSTOM DESIGNED & CRAFTED FLOOR-TO-CEILING SHELVES & CABINETS POSITIONED ALONG WALLS HOUSE THE COWBOYS' EQUIPMENT

SLEEK STAINLESS STEEL WORKSURFACES & DESKS
OCCUPY CENTER OF EQUIPMENT/SITUATION ROOM
MAXIMIZING FUNCTIONALITY & AESTHETICS OF SPACE



Step 6: Select Your Worksurface



APPROPRIATE APPLICATIONS FOR WORKSURFACES

	Breakroom Dry	Breakroom Wet	Copy Center	Laboratory	Mail Center	Nurses Station	Pharmacy	Procedure/ Exam Room Dry	Procedure/ Exam Room Wet	Reception Station	Workroom
HPL LAMINATE	●	●	●		●	●	●	●	●	●	●
CHEMSURF				●							
TRESPA® TOP LAB				●							
STAINLESS STEEL		●		●			●	●	●		
MARMOLEUM	●	●	●		●	●	●	●	●	●	●
SOLID SURFACING	●	●				●	●	●	●	●	●



HPL LAMINATE

- Edges are sealed with 2 mm impact resistant PVC edge banding
- Durable, attractive in a wide selection of colors and patterns
- Cleansed with standard cleaning solution

PHENOLIC RESIN (TRESPA TOP LAB)

- Ultra chemical resistant and durable
- The standard for labs
- Black standard (other colors available upon request)
- Drop in and under mounted sinks available

STAINLESS STEEL


- Superior corrosion resistance
- Perfect for medical environment's scrub downs and bleach washings
- Fire retardant
- Stainless steel means longer life and easy cleaning
- Options include seamless back splash, no drip edge and integrated sinks

MARMOLEUM

- All natural material is environmentally friendly
- Resistant to bacterial growth
- Cleansed with standard cleaning solution
- Durable, attractive in a wide selection of colors and patterns

SOLID SURFACING

- ANSI/UL Standard 723 Test for Surface Burning Characteristics of Building Materials
- NSF/ANSI 51 Certified for food contact
- Cleansed with standard cleaning solution
- Durable, attractive in a wide selection of colors and patterns
- Nonporous meets healthcare standards
- Easily renewed and repaired
 - Easy to clean and maintain – when properly cleaned, Corian® does not support the growth of mold and mildew
 - A nonporous surface with a smooth, seamless appearance
 - Stands up to hard knocks in high-traffic environments that can easily damage other surfaces, like drywall and laminate
- Flexible and versatile
- GREENGUARD Certified® as low VOC emitting material and GREENGUARD Listed for microbial resistance
- Class I (A) Fire rated and heat resistant
- Slip resistant and stain resistant



This step-by-step guide has shown you how easy and simple it is to specify virtually any work area. Whether you require a break room, a laboratory, a sports locker room, a nurses' station, or a one-of-a kind space, custom cabinetry from modular**Caseworks** is your best answer.

When you go online, you will find self-guiding step-by-step instructions and a wide selection of options that will bring your ideas to life.

When your modular**Caseworks** cabinetry is installed you will quickly understand why, for over 40 years, professionals have found their modular, flexible, durable cabinetry from Hamilton Sorter makes their work easier and more efficient.

And, please remember, when you are completely satisfied, the Warranty begins.



Hamilton Sorter's modular**Caseworks** offers a comprehensive cabinet collection with a lifetime guarantee. Handsome, flexible and practical, modular**Caseworks** is now supported by an innovative online specifying system.

modular**Caseworks**

LIFETIME WARRANTY



3158 Production Drive
Fairfield, Ohio 45014
p 800.503.9966
f 800.503.9963
www.hamiltonsorter.com

